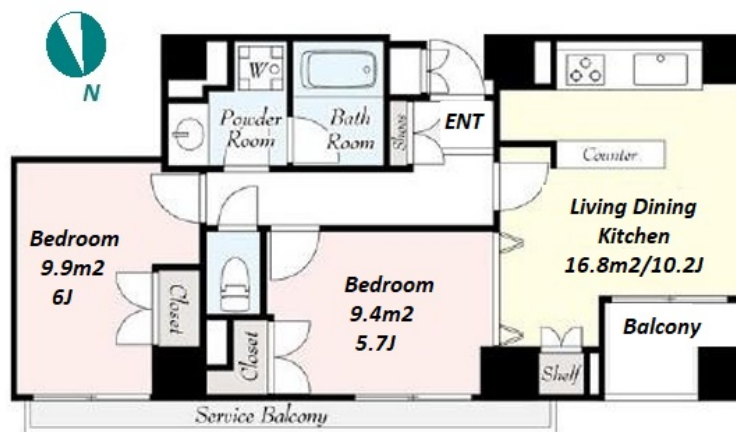


Property Name	ARIA SERENA SHIROKANE	Unit No.	TYPE	Access	Shirokanedai Station on Namboku Line (4 min) Shirokanedai Station on Mita Line (4 min)
		202	Apt.		
Address	2-7-19, Shirokane, Minato-Ku, Tokyo				

In Luxury & Natural "Shirokane" Residential Area



Lease Conditions	
LAYOUT	2 BR
SIZE	55.11 m ² /593.19 ft ²
RENT	JPY 230,000 / month
Management Fee	JPY16,000/month
Deposit	2 months
Key Money	-
Lease Term	Standard lease for 24 months
Available	Now
Renewal Fee	-
Agent Fee	1 month + tax
Other Info	Key Replacement Fee : JPY26,000 Tax not included / No Key Money / Auto lock / Air-Con / Balcony / Internet (Extra Charge) / Penalty Fee for Early Cancellation / CS/CATV / Flooring / Corner Unit

Building Information			
Completion	Jun, 2004	Earthquake Resistance	New
Structure	SRC, 14 floors above and 1 basement floors		
Car Parking	JPY50,000 + tax / month		
Bicycle Parking	TBC		
Music Instrument	-	Pet	-
Facilities	Motorcycle Parking (TBC) / Within 20 min walk to Roppongi / Near Large Parks / Janitor / Delivery box / Elevator / Security / Close to Station / Low-rise		

Remarks
Renters Insurance : Required

*The actual Layout & Size may differ slightly from this floor plans & pictures.



HOUSEREP TOKYO INC.

ハウスレップトーキョー株式会社

#301, 1-4-15, Hiroo, Shibuya-ku, Tokyo 150-0012, Japan

+81 (0)3 6427 5860

inquiry@housserrep-tokyo.com

Transaction Type : Intermediate

Agent Fee : 1 month + tax

Website : www.housserrep-tokyo.com

