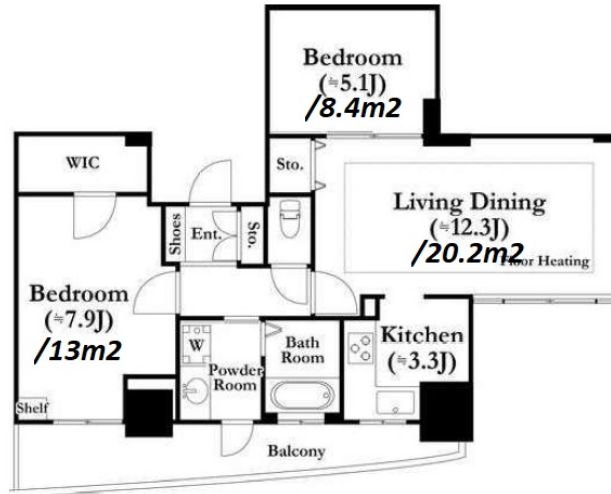


Property Name	KAWADACHO GARDEN 2	Unit No.	TYPE	Access	Akebonobashi Station on Toei Shinjuku Line (6 min) Wakamatsukawada Station on Oedo Line (9 min)
		1404	Apt.		
Address	3-52, Kawadacho, Shinjuku-Ku, Tokyo				



Lease Conditions	
LAYOUT	2 BR
SIZE	68.96 m ² /742.27 ft ²
RENT	JPY 295,500 / month
Management Fee	JPY 10,000/month
Deposit	1 month
Key Money	1 month
Lease Term	Standard lease for 24 months
Available	Mid, Aug, 2024
Renewal Fee	1 month
Agent Fee	1 month + tax
Other Info	Key Replacement Fee : JPY 20,000 Tax not included / Guarantor Company : TBC / Auto lock / Air-Con / Separated Toilet / Balcony / Flooring / Floor Heating / Bathroom dryer / WIC

Building Information	
Completion	Mar, 2003
Earthquake Resistance	New
Structure	RC, 17 floors above and 1 basement floors
Car Parking	JPY 37,800 + tax / month
Bicycle Parking	(Included)
Music Instrument	-
Pet	-
Facilities	Motorcycle Parking (JPY 5,000 + tax / month) / Janitor / Delivery box / Elevator / Security / 24h Garbage Drop-off / High-rise

Remarks
Renters Insurance : Required

*The actual Layout & Size may differ slightly from this floor plans & pictures.



HOUSEREP TOKYO INC.

ハウスレップトーキョー株式会社

#301, 1-4-15, Hiroo, Shibuya-ku, Tokyo 150-0012, Japan

+81 (0)3 6427 5860

inquiry@housserrep-tokyo.com

Transaction Type : Intermediate

Agent Fee : 1 month + tax

Website : www.housserrep-tokyo.com

