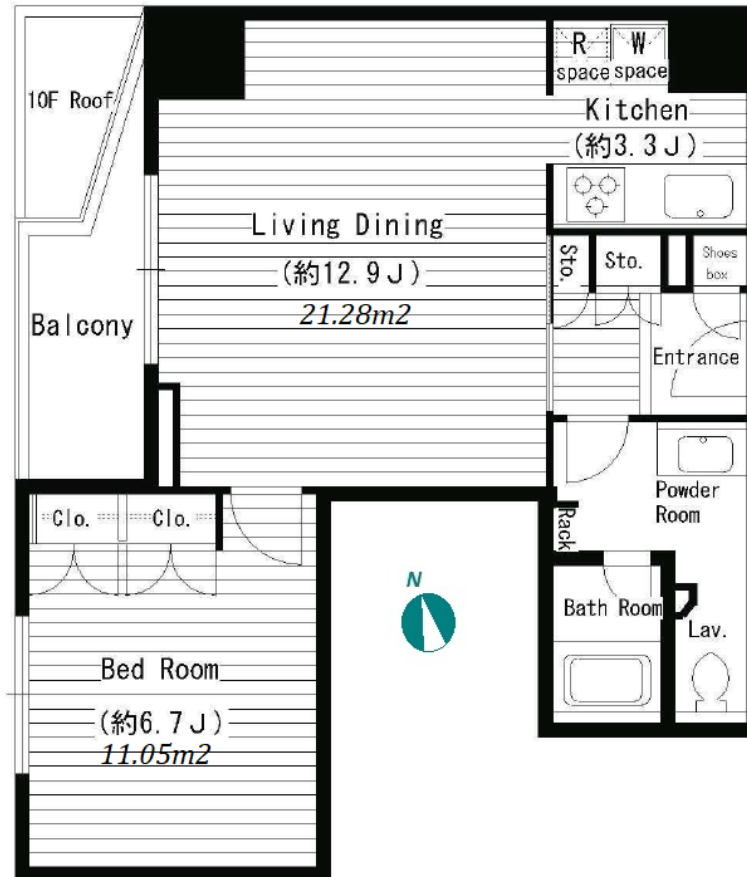


Property Name	REGALO NISHIWASEDA	Unit No.	TYPE	Access	Nishiwaseda Station on Fukutoshin Line (2 min) Takadanobaba Station on Tozai Line (8 min) Takadanobaba Station on JR Yamanote Line (8 min)
		1304	Apt.		
Address	2-21-8, Nishiwaseda(2-chome1-ban1-23-go.2-b, Shinjuku-Ku, Tokyo)				

## Stylish Apt. in Waseda / Takadanobaba area, Shinjuku



\*The actual Layout & Size may differ slightly from this floor plans & pictures.

Lease Conditions			
LAYOUT	1 BR		
SIZE	51.17 m <sup>2</sup> /550.78 ft <sup>2</sup>		
RENT	JPY 190,000 / month		
Management Fee	JPY10,000/month		
Deposit	2 months	Key Money	1 month
Lease Term	Standard lease for 24 months		
Available	Early, Sep, 2024		
Renewal Fee	1 month		
Agent Fee	1 month + tax		
Other Info	Guarantor Company : TBC / Auto lock / Air-Con / Separated Toilet / Balcony / Musical Instrument Negotiable / CS/CATV / Flooring / Bathroom dryer		

Building Information			
Completion	Mar, 2007	Earthquake Resistance	New
Structure	RC, 14 floors above and 1 basement floors		
Car Parking	JPY30,000 + tax / month		
Bicycle Parking	for 1 space ( Included )		
Music Instrument	Negotiable	Pet	N/A
Facilities	Motorcycle Parking (TBC) / Near Large Parks / Delivery box / Elevator / Close to Station		

Remarks	
Renters Insurance : Required / Music instrumental: Upright piano available	



HOUSEREP TOKYO INC.

ハウスレップトーキョー株式会社

#301, 1-4-15, Hiroo, Shibuya-ku, Tokyo 150-0012, Japan

+81 (0)3 6427 5860

inquiry@housserep-tokyo.com

Transaction Type : Intermediate

Agent Fee : 1 month + tax

Website : www.housserep-tokyo.com

