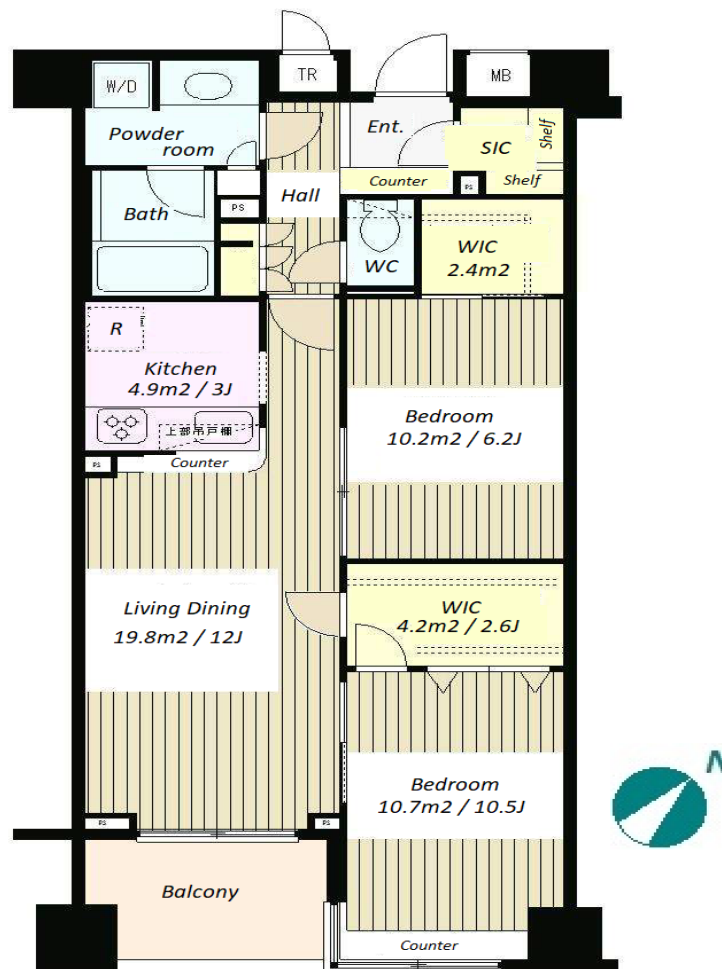


Property Name	KDX Residence Nihonbashisuitengu	Unit No.	TYPE	Access	Suitennguumae Station on Hanzomon Line (2 min) Ninngyouchou Station on Hibiya Line (7 min)
		304	Apt.		
Address	41-6, Nihombashihakozakicho, Chuo-Ku, Tokyo				

Modern Mid Rise Apt. in Nihonbashi, near Suitengu stn.



*The actual Layout & Size may differ slightly from this floor plans & pictures.

Lease Conditions	
LAYOUT	2 BR
SIZE	68.66 m²/739.05 ft²
RENT	JPY 254,000 / month
Management Fee	JPY15,000/month
Deposit	2 months
Key Money	1 month
Lease Term	Standard lease for 24 months
Available	Mid, Aug, 2024
Renewal Fee	1 month
Agent Fee	1 month + tax
Other Info	Key Replacement Fee : JPY20,000 Tax not included / Guarantor Company : TBC / Auto lock / Air-Con / Separated Toilet / Balcony / Internet (Extra Charge) / Penalty Fee for Early Cancellation / Musical Instrument Negotiable / Flooring / Bathroom dryer / WIC

Building Information			
Completion	Mar, 2005	Earthquake Resistance	New
Structure	RC, 11 floors above and 1 basement floors		
Car Parking	extra charge		
Bicycle Parking	for 1 space (Included)		
Music Instrument	Negotiable	Pet	-
Facilities	Motorcycle Parking (TBC) / Within 20 min to Roppongi by train / Near Large Parks / Janitor / Delivery box / Elevator		

Remarks
Renters Insurance : Required



HOUSEREP TOKYO INC.

ハウスレップトーキョー株式会社

#301, 1-4-15, Hiroo, Shibuya-ku, Tokyo 150-0012, Japan

+81 (0)3 6427 5860

inquiry@housserrep-tokyo.com

Transaction Type : Intermediate

Agent Fee : 1 month + tax

Website : www.housserrep-tokyo.com

