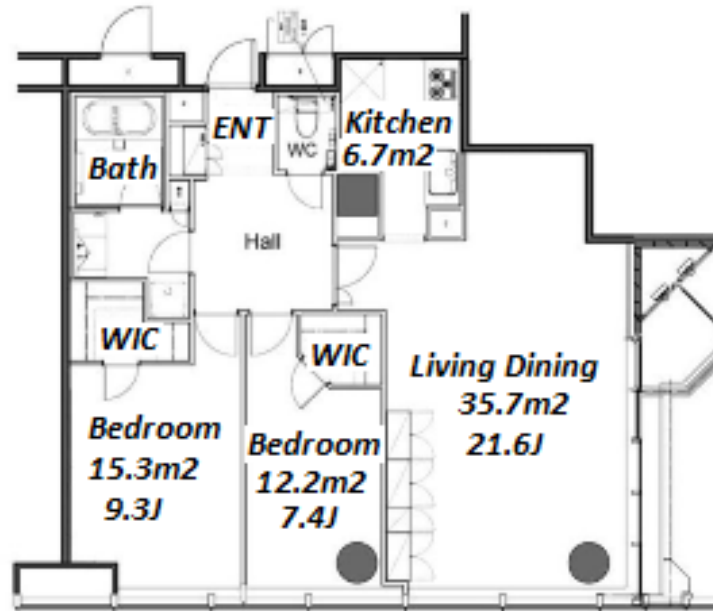


Property Name	HAMAMATSUCHO SQUARE STUDIO	Unit No.	TYPE	Access	Hamamatsuchou Station on JR Yamanote Line (1 min) Daimonn Station on Oedo Line (1 min)
		1801	Apt.		
Address	1-30-5, Hamamatsucho, Minato-Ku, Tokyo				

## Luxury Tower Residence in Hamamatsucho, at Tokyo Bay Area



Lease Conditions		
LAYOUT	2 BR	
SIZE	97.39 m <sup>2</sup> /1048.29 ft <sup>2</sup>	
RENT	JPY 670,000 / month	
Management Fee	-	
Deposit	2 months	Key Money 1 month
Lease Term	Fixed term lease for 24 months	
Available	End, Jul, 2024	
Renewal Fee	-	
Agent Fee	1 month + tax	
Other Info	Key Replacement Fee : JPY20,000 Tax not included / Guarantor Company : TBC / Auto lock / Air-Con / Separated Toilet / Balcony / Flooring / Floor Heating / Bathroom dryer / WIC	

Building Information		
Completion	Sep, 2004	Earthquake Resistance New
Structure	RC, 20 floors above and 1 basement floors	
Car Parking	TBC	
Bicycle Parking	( Included )	
Music Instrument	-	Pet -
Facilities	Motorcycle Parking (TBC) / Trunk Room (extra charge) / Janitor / Delivery box / Elevator / Close to Station / High-rise	

Remarks
Renters Insurance : Required

\*The actual Layout & Size may differ slightly from this floor plans & pictures.



# HOUSEREP TOKYO INC.

ハウスレップトーキョー株式会社

#301, 1-4-15, Hiroo, Shibuya-ku, Tokyo 150-0012, Japan

+81 (0)3 6427 5860

inquiry@housserep-tokyo.com

Transaction Type : Intermediate

Agent Fee : 1 month + tax

Website : www.housserep-tokyo.com

