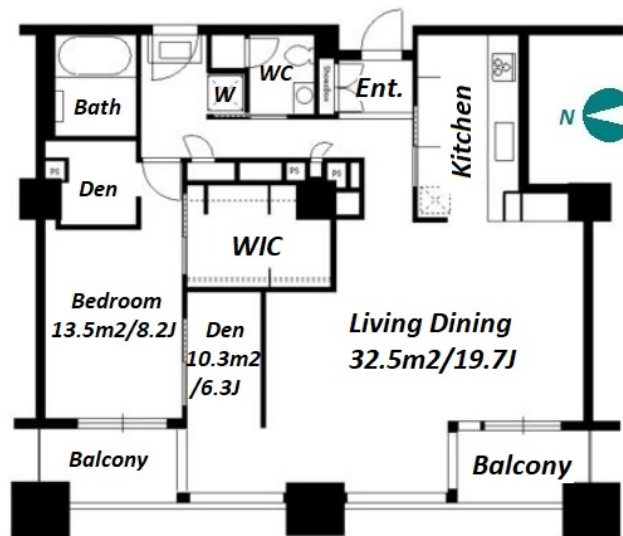


Property Name	CENTURY PARK TOWER	Unit No.	TYPE	Access	Tsukishima Station on Oedo Line (8 min) Hacchoubori Station on JR Keiyo Line (10 min)
		2203	Apt.		
Address	2-1-1, Tsukuda, Chuo-Ku, Tokyo				

High rise apartment in Bay area near Tukishima Sta.



Lease Conditions	
LAYOUT	1 BR
SIZE	96.63 m²/1040.11 ft²
RENT	JPY 450,000 / month
Management Fee	-
Deposit	2 months
Key Money	1 month
Lease Term	Fixed term lease for 24 months
Available	Now
Renewal Fee	-
Agent Fee	1 month + tax
Other Info	Guarantor Company : TBC / Auto lock / Air-Con / Separated Toilet / Balcony / Musical Instrument Negotiable / Flooring / Carpet / Floor Heating / Bathroom dryer / WIC

Building Information	
Completion	Mar, 1999
Earthquake Resistance	New
Structure	SRC, 54 floors above
Car Parking	N/A
Bicycle Parking	TBC
Music Instrument	Negotiable
Pet	Negotiable
Facilities	Motorcycle Parking (TBC) / Near Large Parks / Janitor / Delivery box / Elevator / Security / 24h Garbage Drop-off

Remarks
Renters Insurance : Required

*The actual Layout & Size may differ slightly from this floor plans & pictures.



HOUSEREP TOKYO INC.

ハウズレップトーキョー株式会社

#301, 1-4-15, Hiroo, Shibuya-ku, Tokyo 150-0012, Japan

+81 (0)3 6427 5860

inquiry@housserrep-tokyo.com

Transaction Type : Intermediate

Agent Fee : 1 month + tax

Website : www.housserrep-tokyo.com

