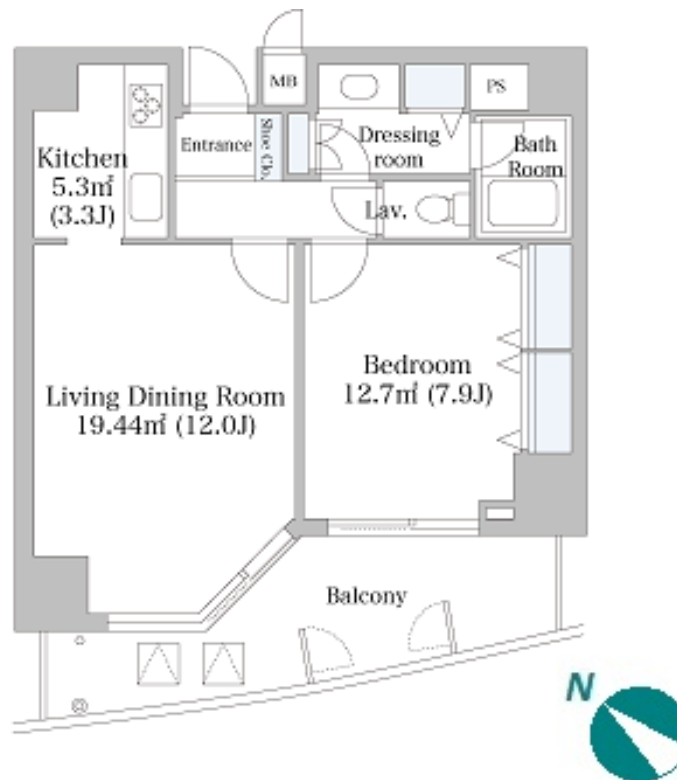


Property Name	NIHONBASHI HAKOZAKI CITY HEIGHTS	Unit No.	TYPE	Access	Suitennguumae Station on Hanzomon Line (2 min) Kayabachou Station on Tozai Line (8 min) Ninngyouchou Station on Hibiya Line (9 min)
		1402	Apt.		
Address	26-1, Nihombashihakozakicho, Chuo-Ku, Tokyo				

## Mid-rise Apt. near Nihonbashi



Lease Conditions		
LAYOUT	1 BR	
SIZE	55.9 m <sup>2</sup> /601.7 ft <sup>2</sup>	
RENT	JPY 270,000 / month	
Management Fee	JPY20,000/month	
Deposit	2 months	Key Money -
Lease Term	Fixed term lease for 36 months	
Available	End, Aug, 2024	
Renewal Fee	-	
Agent Fee	1 month + tax	
Other Info	Depreciation : 1 month / No Key Money / Auto lock / Renovated / Air-Con / Separated Toilet / Balcony / Penalty Fee for Early Cancellation / Flooring	

Building Information		
Completion	Apr, 1996	Earthquake Resistance New
Structure	SRC, 14 floors above and 1 basement floors	
Car Parking	JPY30,000 ~ 65,000/ month	
Bicycle Parking	extra charge	
Music Instrument	-	Pet Allowed
Facilities	Delivery box / Elevator	

Remarks
Renters Insurance : Required / Pet:additional deposit ( 1 month )

\*The actual Layout & Size may differ slightly from this floor plans & pictures.



HOUSEREP TOKYO INC.

ハウズレップトーキョー株式会社

#301, 1-4-15, Hiroo, Shibuya-ku, Tokyo 150-0012, Japan

+81 (0)3 6427 5860

inquiry@housserep-tokyo.com

Transaction Type : Intermediate

Agent Fee : 1 month + tax

Website : www.housserep-tokyo.com

