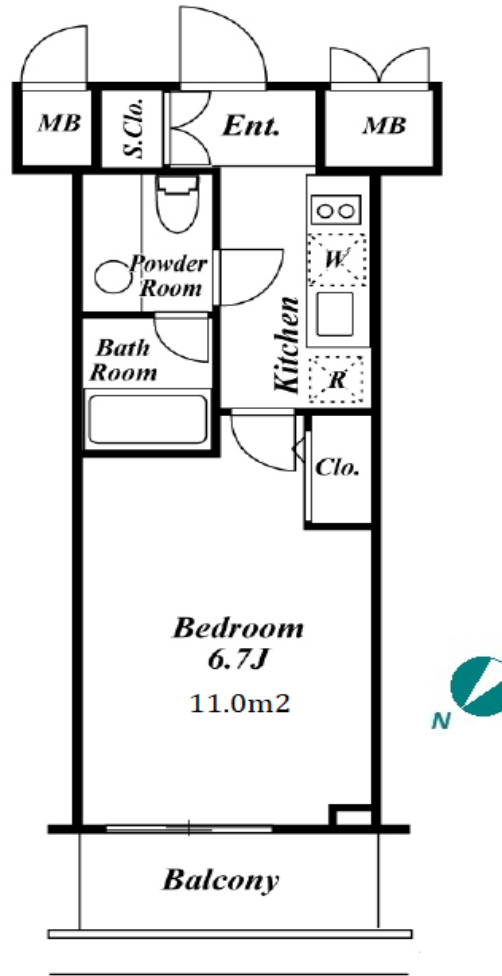


Property Name	KDX RESIDENCE TOGOSHI	Unit No.	TYPE	Access	Togoshiginnza Station on Toei Asakusa Line (4 min) Togoshikouenn Station on Oimachi Line (6 min) Togoshiginnza Station on Tokyu Ikegami Line (8 min)
		309	Apt.		
Address	5-1-1, Togoshi, Shinagawa-Ku, Tokyo				

## Luxury Apartment w/ Amenities in Togoshi, near Shinagawa



\*The actual Layout & Size may differ slightly from this floor plans & pictures.

Lease Conditions			
LAYOUT	Studio		
SIZE	21.46 m <sup>2</sup> /230.99 ft <sup>2</sup>		
RENT	JPY 102,000 / month		
Management Fee	JPY8,000/month		
Deposit	2 months	Key Money	-
Lease Term	Standard lease for 24 months		
Available	End, Jul, 2024		
Renewal Fee	1 month		
Agent Fee	1 month + tax		
Other Info	Key Replacement Fee : JPY18,000 Tax not included / Guarantor Company : TBC / No Key Money / Auto lock / Air-Con / Separated Toilet / Balcony / Internet Included / Penalty Fee for Early Cancellation / Flooring / Washer / Dryer / Bathroom dryer		
Building Information			
Completion	Nov, 2006	Earthquake Resistance	New
Structure	RC, 14 floors above and 1 basement floors		
Car Parking	JPY34,000 ~ 36,000 + tax / month		
Bicycle Parking	N/A		
Music Instrument	-	Pet	N/A
Facilities	Gym (( Included )) / Janitor / Delivery box / Elevator / Security / Close to Station / Fitness / Gym		



# HOUSEREP TOKYO INC.

ハウスレップトーキョー株式会社

#301, 1-4-15, Hiroo, Shibuya-ku, Tokyo 150-0012, Japan

+81 (0)3 6427 5860

inquiry@housserep-tokyo.com

Transaction Type : Intermediate

Agent Fee : 1 month + tax

Website : www.housserep-tokyo.com



Remarks