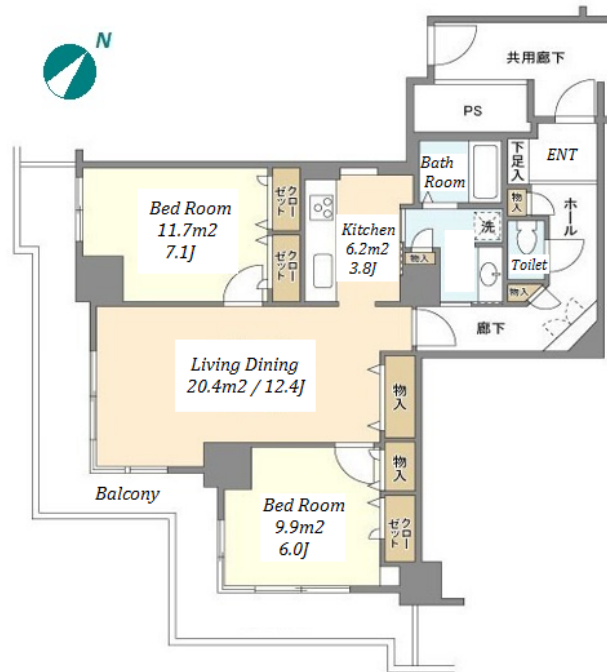
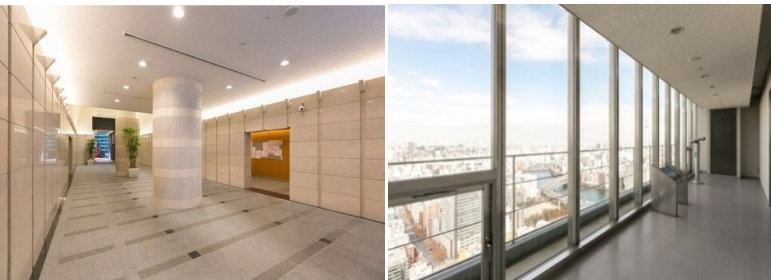


Property Name	TORNARE NIHONBASHI HAMACHO		Unit No.	TYPE	Access	Suitennguumae Station on Hanzomon Line (6 min)
	Address	3-3-1, Nihombashihamacho, Chuo-Ku, Tokyo		1610		

Tower Residence in Nihonbashi-hamacho, near Suitengu stn.



Lease Conditions		
LAYOUT	2 BR	
SIZE	79.62 m ² /857.02 ft ²	
RENT	JPY 303,000 / month	
Management Fee	JPY10,000/month	
Deposit	1 month	Key Money 0.5 months
Lease Term	Standard lease for 24 months	
Available	End, Jul, 2024	
Renewal Fee	1 month	
Agent Fee	1 month + tax	
Other Info	Key Replacement Fee : JPY30,000 Tax not included / Guarantor Company : TBC / Auto lock / Air-Con / Separated Toilet / Balcony / Flooring / IH Stoves / Bathroom dryer	

Building Information		
Completion	Aug, 2005	Earthquake Resistance New
Structure	SRC, 47 floors above	
Car Parking	TBC	
Bicycle Parking	(Included)	
Music Instrument	-	Pet -
Facilities	Motorcycle Parking (TBC) / Trunk Room ((Included)) / Within 20 min to Tokyo station by car / Near Large Parks / Janitor / Delivery box / Elevator / 24h Garbage Drop-off / High-rise	

Remarks
Renters Insurance : Required / Luxury High Rise Condominium near Hamacho-park

*The actual Layout & Size may differ slightly from this floor plans & pictures.



HOUSEREP TOKYO INC.

ハウスレップトーキョー株式会社

#301, 1-4-15, Hiroo, Shibuya-ku, Tokyo 150-0012, Japan

+81 (0)3 6427 5860

inquiry@housserrep-tokyo.com

Transaction Type : Intermediate

Agent Fee : 1 month + tax

Website : www.housserrep-tokyo.com

