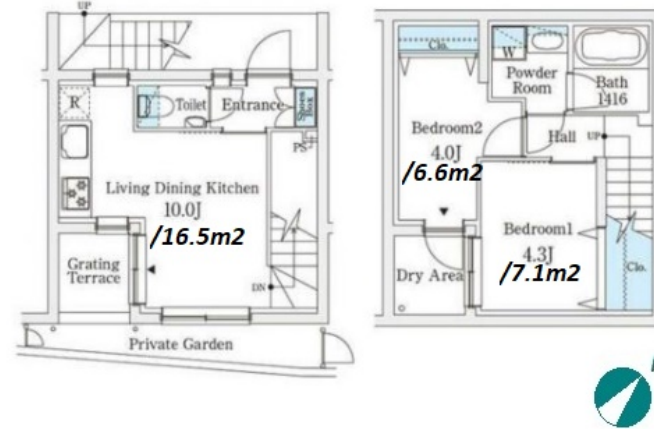
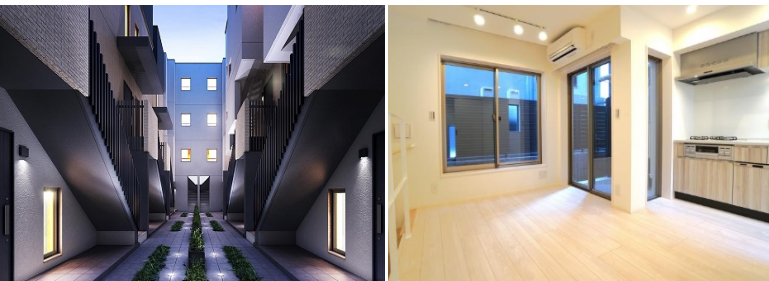


Property Name	AGRATIO TERRACE EBISU	Unit No.	TYPE	Access	Meguro Station on JR Yamanote Line (11 min) Ebisu Station on JR Yamanote Line (12 min)
		105	Apt.		
Address	2-7-22, Mita, Meguro-Ku, Tokyo				

## A Terrace House-type Apt. in Ebisu, near Yebisu Garden Place



Lease Conditions	
LAYOUT	2 BR
SIZE	45.59 m²/490.72 ft²
RENT	JPY 223,000 / month
Management Fee	JPY15,000/month
Deposit	2 months
Key Money	-
Lease Term	Standard lease for 24 months
Available	Now
Renewal Fee	1 month
Agent Fee	1 month + tax
Other Info	Guarantor Company : TBC / No Key Money / Auto lock / Air-Con / Separated Toilet / Balcony / Loft/Maisonnette / Penalty Fee for Early Cancellation / Garden/Terrace / Dishwasher / Bathroom dryer

Building Information			
Completion	Oct, 2023	Earthquake Resistance	New
Structure	RC, 4 floors above and 1 basement floors		
Car Parking	N/A		
Bicycle Parking	-		
Music Instrument	-	Pet	Allowed
Facilities	Delivery box / Newly-built (~7 y/o)		

Remarks
Renters Insurance : Required / Pet:additional deposit ( 1 month )

\*The actual Layout & Size may differ slightly from this floor plans & pictures.



# HOUSEREP TOKYO INC.

ハウスレップトーキョー株式会社

#301, 1-4-15, Hiroo, Shibuya-ku, Tokyo 150-0012, Japan

+81 (0)3 6427 5860

inquiry@housserep-tokyo.com

Transaction Type : Intermediate

Agent Fee : 1 month + tax

Website : www.housserep-tokyo.com

