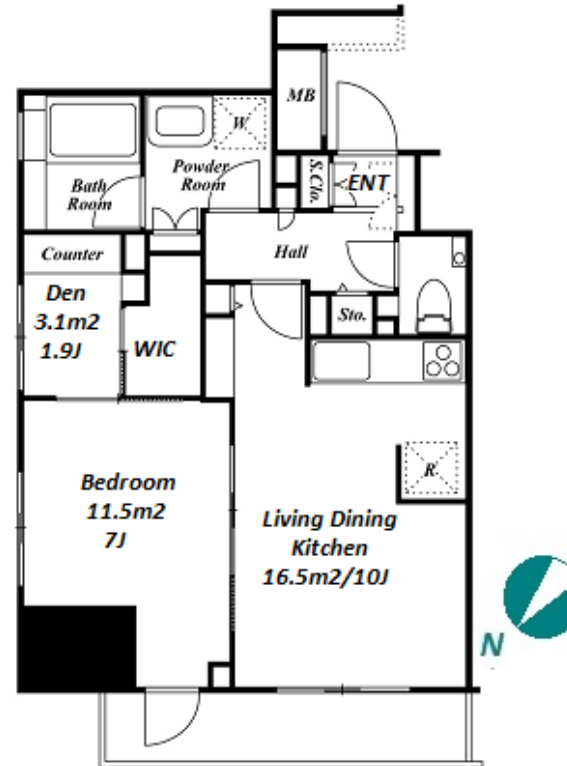


Property Name	ASAHI MANSION GOTANDA	Unit No.	TYPE	Access	Gotanda Station on JR Yamanote Line (5 min) Gotanda Station on Toei Asakusa Line (5 min) Gotanda Station on Tokyu Ikegami Line (5 min)
		1302	Apt.		
Address	2-28-4, Nishigotanda, Shinagawa-Ku, Tokyo				

High-rise Apt. in Gotanda, easy access to Ebisu, Shibuya, Shinjuku



Lease Conditions	
LAYOUT	1 BR+Den
SIZE	47.59 m²/512.25 ft²
RENT	JPY 211,000 / month
Management Fee	JPY 10,000/month
Deposit	2 months
Key Money	-
Lease Term	Fixed term lease for 36 months
Available	Mid, Jul, 2024
Renewal Fee	-
Agent Fee	1 month + tax
Other Info	Guarantor Company : TBC / No Key Money / Auto lock / Air-Con / Separated Toilet / Balcony / Penalty Fee for Early Cancellation / Musical Instrument Negotiable / Flooring / Floor Heating / Bathroom dryer / WIC / Corner Unit

Building Information			
Completion	Apr, 2013	Earthquake Resistance	New
Structure	RC, 18 floors above		
Car Parking	TBC		
Bicycle Parking	TBC		
Music Instrument	Negotiable	Pet	N/A
Facilities	Within 20 min to Roppongi by train / Within 20 min to Tokyo station by car / Near Large Parks / Delivery box / Elevator / High-rise		

Remarks

\*The actual Layout & Size may differ slightly from this floor plans & pictures.



HOUSEREP TOKYO INC.

ハウズレップトーキョー株式会社

#301, 1-4-15, Hiroo, Shibuya-ku, Tokyo 150-0012, Japan

+81 (0)3 6427 5860

inquiry@housserep-tokyo.com

Transaction Type : Intermediate

Agent Fee : 1 month + tax

Website : www.housserep-tokyo.com

