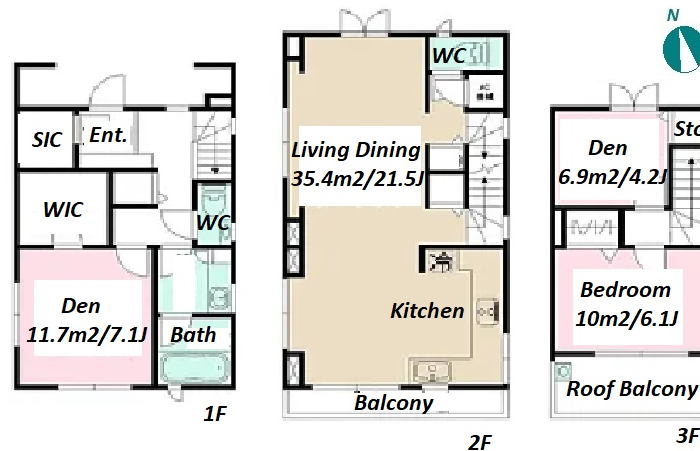


Property Name	SHIMOUMA 648 HOUSE	Unit No.	TYPE	Access	Gakugeidaigaku Station on Toyoko Line (9 min)
		-	House		
Address	6-48-12, Shimoma, Setagaya-Ku, Tokyo				



Lease Conditions			
LAYOUT	1 BR+Den		
SIZE	102.25 m <sup>2</sup> /1100.6 ft <sup>2</sup>		
RENT	JPY 450,000 / month		
Management Fee	-		
Deposit	2 months	Key Money	1 month
Lease Term	Fixed term lease for 60 months		
Available	Early, Sep, 2024		
Renewal Fee	-		
Agent Fee	1 month + tax		
Other Info	Key Replacement Fee : JPY25,000 Tax not included / Guarantor Company : TBC / Air-Con / Separated Toilet / Balcony / Musical Instrument Negotiable / Flooring / Dishwasher / Bathroom dryer / 2 Toilets		

Building Information			
Completion	May, 2011	Earthquake Resistance	New
Structure	Wooden, 3 floors above		
Car Parking	for 1 space ( Included )		
Bicycle Parking	( Included )		
Music Instrument	Negotiable	Pet	N/A
Facilities	Motorcycle Parking (( Included )) / House		

Remarks
Renters Insurance : Required

\*The actual Layout & Size may differ slightly from this floor plans & pictures.



HOUSEREP TOKYO INC.

ハウズレップトーキョー株式会社

#301, 1-4-15, Hiroo, Shibuya-ku, Tokyo 150-0012, Japan

+81 (0)3 6427 5860

inquiry@housserep-tokyo.com

Transaction Type : Intermediate

Agent Fee : 1 month + tax

Website : www.housserep-tokyo.com

