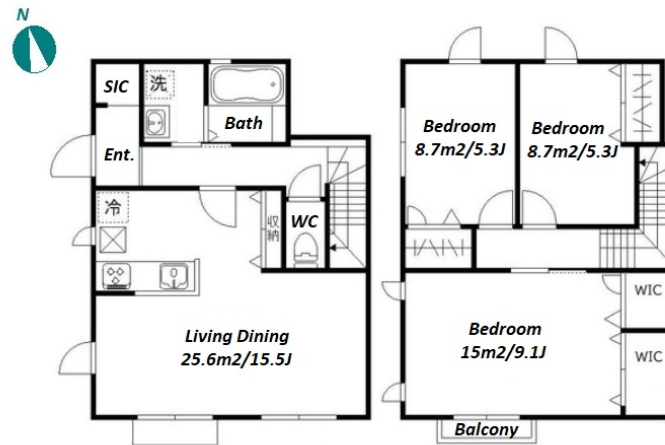


Property Name	GRAND RESIDENCE DENENCHOFU	Unit No.	TYPE	Access	Dennennchoufu Station on Toyoko Line (7 min) Jiyugaoka Station on Toyoko Line (14 min)
		-	House		
Address	1-14-8, Tamagawadenenchofu, Setagaya-Ku, Tokyo				



Lease Conditions			
LAYOUT	3 BR		
SIZE	89.04 m²/958.41 ft²		
RENT	JPY 326,000 / month		
Management Fee	JPY4,000/month		
Deposit	2 months	Key Money	2 months
Lease Term	Standard lease for 24 months		
Available	End, Aug, 2024		
Renewal Fee	1 month		
Agent Fee	1 month + tax		
Other Info	Key Replacement Fee : JPY25,000 Tax not included / Guarantor Company : TBC / Air-Con / Separated Toilet / Balcony / Internet (Extra Charge) / Flooring / Bathroom dryer / WIC		

Building Information			
Completion	Feb, 2019	Earthquake Resistance	New
Structure	Wooden, 2 floors above		
Car Parking	-		
Bicycle Parking	for 3 spaces (Included)		
Music Instrument	-	Pet	N/A
Facilities	House / Newly-built (~7 y/o)		

Remarks
Renters Insurance : Required

*The actual Layout & Size may differ slightly from this floor plans & pictures.



HOUSEREP TOKYO INC.

ハウスレップトーキョー株式会社

#301, 1-4-15, Hiroo, Shibuya-ku, Tokyo 150-0012, Japan

+81 (0)3 6427 5860

inquiry@housserep-tokyo.com

Transaction Type : Intermediate

Agent Fee : 1 month + tax

Website : www.housserep-tokyo.com

