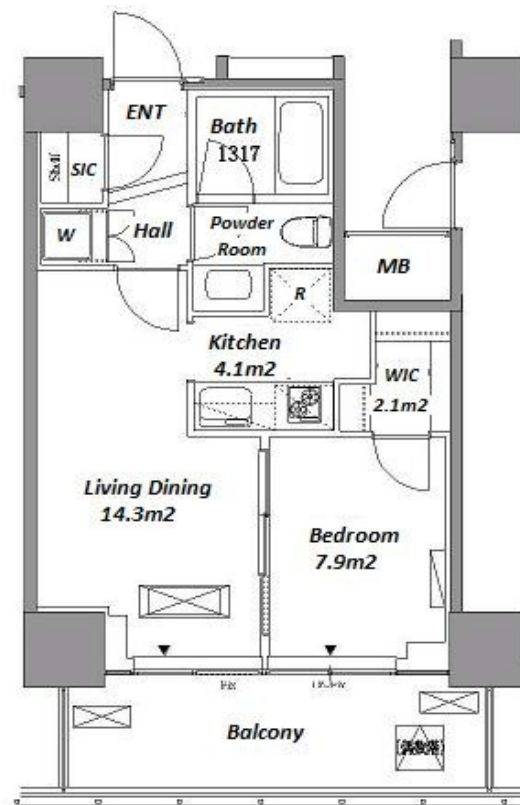
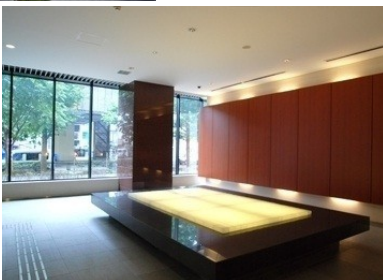


Property Name	RESIDIA TOWER MEGURO FUDOMAE	Unit No.	TYPE	Access	Gotanda Station on JR Yamanote Line (7 min) Fudoumae Station on Tokyu Meguro Line (8 min) Meguro Station on Mita Line (14 min)
	Address	3-7-6, Nishigotanda, Shinagawa-Ku, Tokyo	311		

Stylish High Rise Apt. in Meguro / Gotanda, near Meguro River



*The actual Layout & Size may differ slightly from this floor plans & pictures.

Lease Conditions		
LAYOUT	1 BR	
SIZE	38.74 m ² /416.99 ft ²	
RENT	JPY 175,000 / month	
Management Fee	JPY10,000/month	
Deposit	2 months	Key Money 1 month
Lease Term	Standard lease for 24 months	
Available	Early, Jul, 2024	
Renewal Fee	1 month	
Agent Fee	1 month + tax	
Other Info	Key Replacement Fee : JPY20,000 Tax not included / Guarantor Company : TBC / Auto lock / Air-Con / Separated Toilet / Balcony / Internet (Extra Charge) / Penalty Fee for Early Cancellation / Musical Instrument Negotiable / Flooring / Bathroom dryer / WIC	

Building Information		
Completion	Jan, 2007	Earthquake Resistance New
Structure	RC, 30 floors above	
Car Parking	TBC	
Bicycle Parking	TBC	
Music Instrument	Negotiable	Pet Negotiable
Facilities	Motorcycle Parking (TBC) / Trunk Room (TBC) / Gym ((Included)) / Front desk / Janitor / Delivery box / Elevator / Sky lounge / Security / High-rise	

Remarks
Internet : JPY1,500+tax/month Tenant service membership fee: JPY.10,000+tax/2years



HOUSEREP TOKYO INC.

ハウスレップトーキョー株式会社

#301, 1-4-15, Hiroo, Shibuya-ku, Tokyo 150-0012, Japan

+81 (0)3 6427 5860

inquiry@housserrep-tokyo.com

Transaction Type : Intermediate

Agent Fee : 1 month + tax

Website : www.housserrep-tokyo.com

