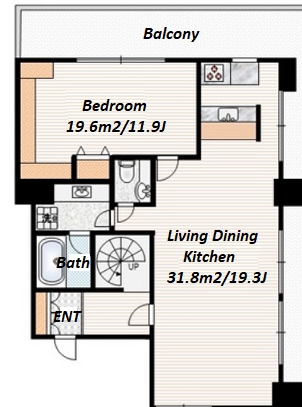
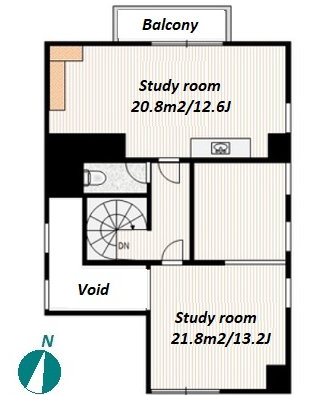


Property Name	IL BOSCO	Unit No.	TYPE	Access	Nakamurabashi Station on Seibu Ikebukuro Line (3 min) Fujimidai Station on Seibu Ikebukuro Line (11 min) Saginomiya Station on Seibu Shinjuku Line (18 min)
		601	Apt.		
Address	4, Nakamurakita, Nerima-Ku, Tokyo				



Lease Conditions

LAYOUT	1 BR+S		
SIZE	141.04 m ² /1518.14 ft ²		
RENT	JPY 270,000 / month		
Management Fee	JPY5,000/month		
Deposit	2 months	Key Money	1 month
Lease Term	Standard lease for 24 months		
Available	Now		
Renewal Fee	1 month		
Agent Fee	1 month + tax		
Other Info	Key Replacement Fee : JPY30,000 Tax not included / Auto lock / Air-Con / Separated Toilet / Balcony / Loft/Maisonnette / Flooring / Bathroom dryer / Corner Unit / 2 Toilets		

Building Information

Completion	Sep, 1998	Earthquake Resistance	New
Structure	RC, 7 floors above		
Car Parking	-		
Bicycle Parking	extra charge		
Music Instrument	-	Pet	-
Facilities	Delivery box / Elevator / Close to Station		

Remarks

Renters Insurance : Required

*The actual Layout & Size may differ slightly from this floor plans & pictures.



HOUSEREP TOKYO INC.

ハウスレップトーキョー株式会社

#301, 1-4-15, Hiroo, Shibuya-ku, Tokyo 150-0012, Japan

+81 (0)3 6427 5860

inquiry@housserep-tokyo.com

Transaction Type : Intermediate

Agent Fee : 1 month + tax

Website : www.housserep-tokyo.com

