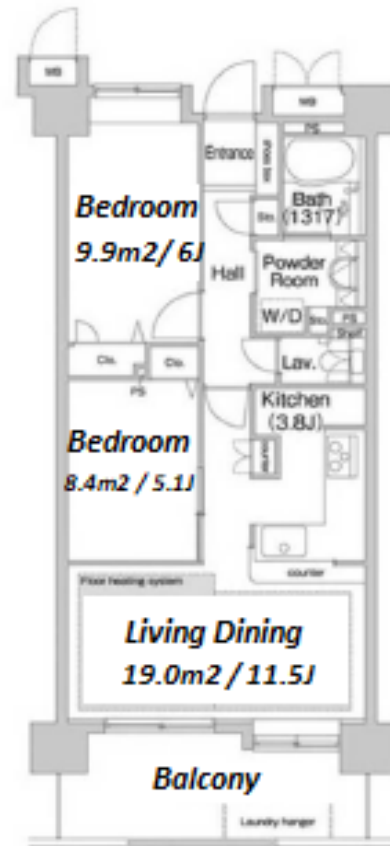
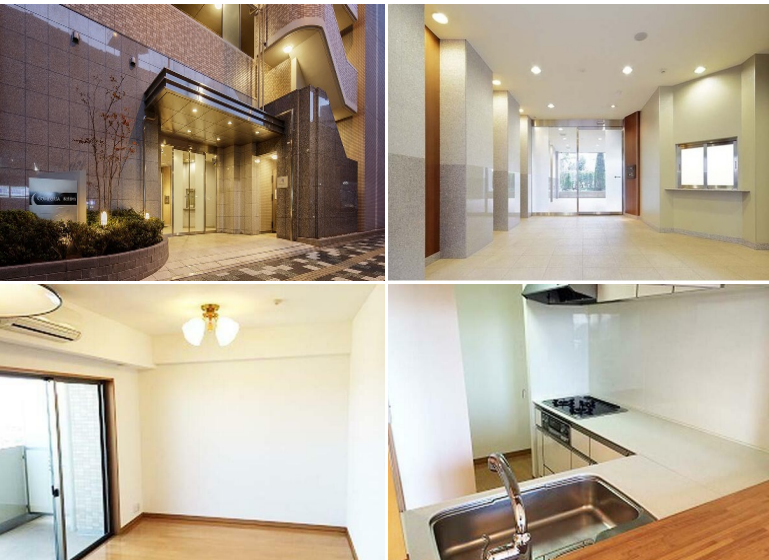


Property Name	COMFORIA ITABASHI NAKAJUKU	Unit No.	TYPE	Access	Itabashikuyakushomae Station on Mita Line (2 min)
	Address	62-2, Nakajuku, Itabashi-Ku, Tokyo	704		

Mid-rise Apt. in Itabashi, easy access to Sugamo / Otemachi / Meguro



Lease Conditions		
LAYOUT	2 BR	
SIZE	58.86 m <sup>2</sup> /633.56 ft <sup>2</sup>	
RENT	JPY 207,000 / month	
Management Fee	JPY12,000/month	
Deposit	2 months	Key Money 1 month
Lease Term	Standard lease for 24 months	
Available	Early, Jul, 2024	
Renewal Fee	1 month	
Agent Fee	1 month + tax	
Other Info	Key Replacement Fee : JPY20,000 Tax not included / Auto lock / Air-Con / Separated Toilet / Balcony / Internet (Extra Charge) / Flooring / Floor Heating / Bathroom dryer	

Building Information		
Completion	Mar, 2006	Earthquake Resistance New
Structure	SRC, 14 floors above	
Car Parking	TBC	
Bicycle Parking	extra charge	
Music Instrument	-	Pet -
Facilities	Motorcycle Parking (extra charge) / Trunk Room (TBC) / Janitor / Delivery box / Elevator	

Remarks
Renters Insurance : Required / Cleaning fee: JPY 48,000 + tax / AC cleaning fee: JPY 20,000 + tax

\*The actual Layout & Size may differ slightly from this floor plans & pictures.



HOUSEREP TOKYO INC.

ハウスレップトーキョー株式会社

#301, 1-4-15, Hiroo, Shibuya-ku, Tokyo 150-0012, Japan

+81 (0)3 6427 5860

inquiry@housserep-tokyo.com

Transaction Type : Intermediate

Agent Fee : 1 month + tax

Website : www.housserep-tokyo.com

