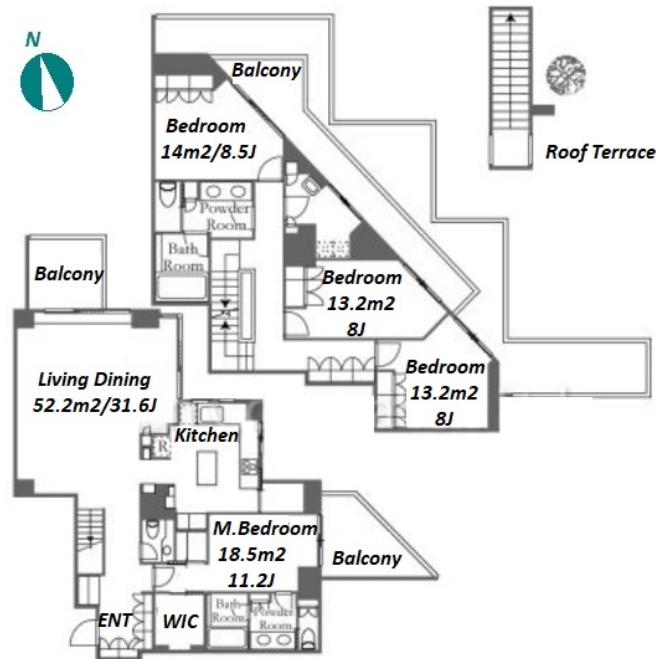


Property Name	AZABU GARDENS WEST	Unit No.	TYPE	Access	Azabujuban Station on Namboku Line (8 min) Roppongi Station on Hibiya Line (11 min) Hiroo Station on Hibiya Line (15 min)
		411	Apt.		
Address	3-7-5, Motoazabu, Minato-Ku, Tokyo				

Modern Luxury Apt. in Azabu, near "Azabujuan" & "Roppongi Hills"



Lease Conditions

LAYOUT	4 BR	
SIZE	232.14 m²/2498.73 ft²	
RENT	JPY 2,400,000 / month	
Management Fee	-	
Deposit	4 months	Key Money -
Lease Term	Fixed term lease for 24 months	
Available	Mid, Aug, 2024	
Renewal Fee	-	
Agent Fee	1 month + tax	
Other Info	Auto lock / Fridge / Air-Con / Separated Toilet / Balcony / Loft/Maisonnette / Penalty Fee for Early Cancellation / 2+ bathrooms / Roof Balcony / Floor Heating / Curtain / Washer / Dryer / Dishwasher / Oven / WIC / 2 Toilets	

Building Information

Completion	Apr, 2015	Earthquake Resistance	New
Structure	RC, 4 floors above and 3 basement floors		
Car Parking	for 1 space (Included)		
Bicycle Parking	TBC		
Music Instrument	-	Pet	Negotiable
Facilities	Motorcycle Parking (TBC) / Trunk Room (for 1 space(Included)) / Gym ((Included)) / Within 20 min walk to Roppongi / Near Large Parks / Front desk / Concierge / Janitor / Delivery box / Elevator / Fitness / Gym / Low-rise		

Remarks

Renters Insurance : Required

*The actual Layout & Size may differ slightly from this floor plans & pictures.



HOUSEREP TOKYO INC.

ハウスレップトーキョー株式会社

#301, 1-4-15, Hiroo, Shibuya-ku, Tokyo 150-0012, Japan

+81 (0)3 6427 5860

inquiry@housserrep-tokyo.com

Transaction Type : Intermediate

Agent Fee : 1 month + tax

Website : www.housserrep-tokyo.com

