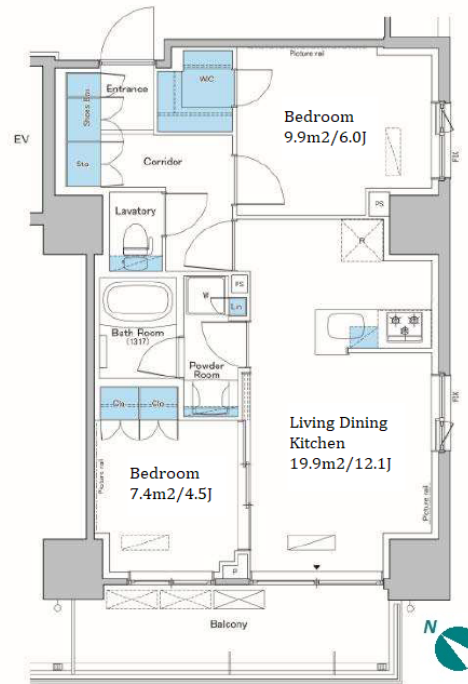


Property Name	LEFOND PROGRES TAKINOGAWA	Unit No.	TYPE	Access	Nishisugamo Station on Mita Line (5 min) Itabashi Station on JR Saikyo Line (8 min)
		507	Apt.		
Address	6-44-12, Takinogawa, Kita-Ku, Tokyo				

Stylish Mid-rise Apt. in Takinogawa, near Itabashi



*The actual Layout & Size may differ slightly from this floor plans & pictures.

Lease Conditions	
LAYOUT	2 BR
SIZE	55.21 m²/594.27 ft²
RENT	JPY 228,000 / month
Management Fee	JPY15,000/month
Deposit	2 months
Key Money	-
Lease Term	Standard lease for 24 months
Available	Now
Renewal Fee	1 month
Agent Fee	1 month + tax
Other Info	Key Replacement Fee : JPY20,000 Tax not included / Guarantor Company : TBC / No Key Money / Free rent / Auto lock / Air-Con / Separated Toilet / Balcony / Internet Included / Penalty Fee for Early Cancellation / Musical Instrument Negotiable / CS/CATV / Flooring / Bathroom dryer / WIC

Building Information	
Completion	Sep, 2015
Earthquake Resistance	New
Structure	RC, 13 floors above
Car Parking	JPY30,000 + tax / month
Bicycle Parking	for 1 space (Included)
Music Instrument	Negotiable
Pet	Allowed
Facilities	Motorcycle Parking (JPY3,000 + tax / month) / Delivery box / Elevator

Remarks
Renters Insurance : Required / Pet:additional deposit (1 month) / Pet : a small dog or a cat / Cleaning fee: JPY.72,877 / Monthly handling charge: JPY.100 + tax



HOUSEREP TOKYO INC.

ハウスレップトーキョー株式会社

#301, 1-4-15, Hiroo, Shibuya-ku, Tokyo 150-0012, Japan

+81 (0)3 6427 5860 inquiry@housserrep-tokyo.com

Transaction Type : Intermediate

Agent Fee : 1 month + tax

Website : www.housserrep-tokyo.com

