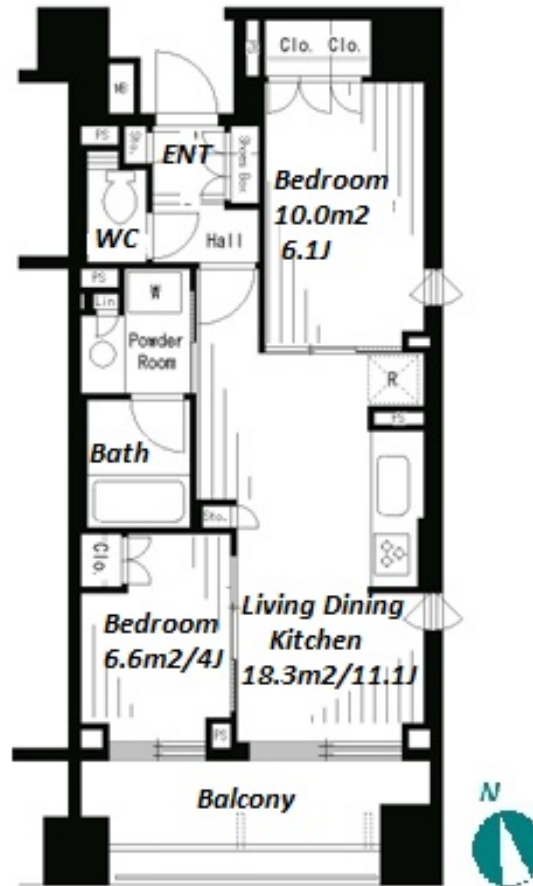


Property Name	PARK AXIS OTSUKA	Unit No.	TYPE	Access	Otsuka Station on JR Yamanote Line (3 min) Shinnootsuka Station on Marunouchi Line (12 min)
		404	Apt.		
Address	2-3-11, Kitaotsuka, Toshima-Ku, Tokyo				

Stylish Apt with south-facing balcony near lively Otsuka / Ikebukuro district



\*The actual Layout & Size may differ slightly from this floor plans & pictures.

Lease Conditions			
LAYOUT	2 BR		
SIZE	50.11 m²/539.37 ft²		
RENT	JPY 195,000 / month		
Management Fee	JPY12,000/month		
Deposit	2 months	Key Money	1 month
Lease Term	Standard lease for 24 months		
Available	End, Jul, 2024		
Renewal Fee	1 month		
Agent Fee	1 month + tax		
Other Info	Key Replacement Fee : JPY15,000 Tax not included / Guarantor Company : TBC / Auto lock / Air-Con / Separated Toilet / Balcony / Internet (Extra Charge) / Penalty Fee for Early Cancellation / Musical Instrument Negotiable / CS/CATV / Flooring		

Building Information			
Completion	Dec, 2005	Earthquake Resistance	New
Structure	RC, 14 floors above		
Car Parking	TBC		
Bicycle Parking	for 1 space ( Included )		
Music Instrument	Negotiable	Pet	N/A
Facilities	Motorcycle Parking (TBC) / Near Large Parks / Janitor / Delivery box / Elevator		

Remarks
Renters Insurance : Required



HOUSEREP TOKYO INC.

ハウスレップトーキョー株式会社

#301, 1-4-15, Hiroo, Shibuya-ku, Tokyo 150-0012, Japan

+81 (0)3 6427 5860 inquiry@housserrep-tokyo.com

Transaction Type : Intermediate

Agent Fee : 1 month + tax

Website : www.housserrep-tokyo.com

