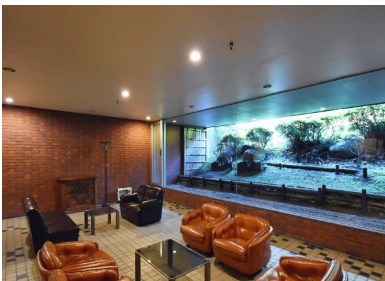


Property Name	ROYAL YOYOGI GARDEN	Unit No.	TYPE	Access	Yoyogikouenn Station on Chiyoda Line (5 min) Yoyogihachimann Station on Odakyu Line (5 min)
		3F	Apt.		
Address	39-1, Motoyoyogicho, Shibuya-Ku, Tokyo				



Lease Conditions			
LAYOUT	3 BR		
SIZE	150.54 m ² /1620.39 ft ²		
RENT	JPY 1,100,000 / month		
Management Fee	-		
Deposit	2 months	Key Money	1 month
Lease Term	Fixed term lease for 36 months		
Available	Negotiable		
Renewal Fee	1 month		
Agent Fee	1 month + tax		
Other Info	Guarantor Company : TBC / Auto lock / Air-Con / Separated Toilet / Balcony / Flooring / Dishwasher / Bathroom dryer / WIC		

Building Information			
Completion	Aug, 1974	Earthquake Resistance	Old
Structure	RC, 3 floors above		
Car Parking	for 1 space (Included)		
Bicycle Parking	-		
Music Instrument	-	Pet	Allowed
Facilities	Janitor / Security / Low-rise		

Remarks
Renters Insurance : Required / Pet:additional deposit (1 month)

*The actual Layout & Size may differ slightly from this floor plans & pictures.



HOUSEREP TOKYO INC.

ハウズレップトーキョー株式会社

#301, 1-4-15, Hiroo, Shibuya-ku, Tokyo 150-0012, Japan

+81 (0)3 6427 5860

inquiry@housserrep-tokyo.com

Transaction Type : Intermediate

Agent Fee : 1 month + tax

Website : www.housserrep-tokyo.com

