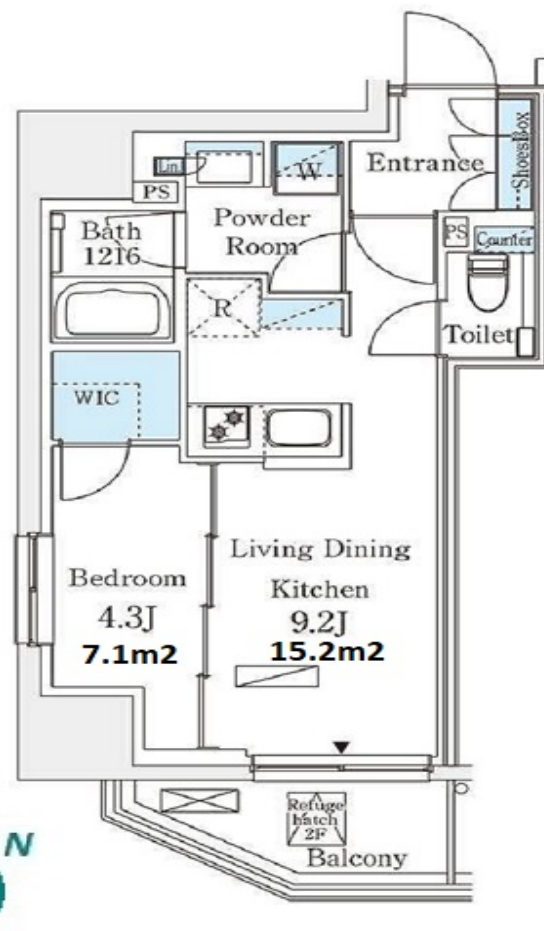
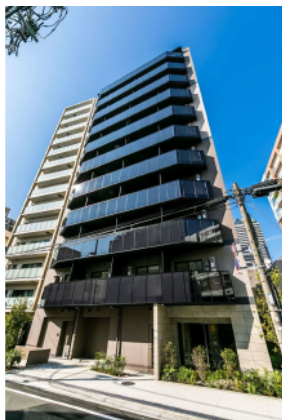


Property Name	PARK AXIS AKASAKA	Unit No.	TYPE	Access	Akasaka Station on Chiyoda Line (4 min) Tameikesannou Station on Ginza Line (10 min)
		604	Apt.		
Address	6-11-4, Akasaka, Minato-Ku, Tokyo				

Stylish Mid-rise Apt. in Akasaka, near Roppongi



*The actual Layout & Size may differ slightly from this floor plans & pictures.

Lease Conditions	
LAYOUT	1 BR
SIZE	35.54 m ² /382.54 ft ²
RENT	JPY 223,000 / month
Management Fee	JPY12,000/month
Deposit	2 months
Key Money	-
Lease Term	Standard lease for 24 months
Available	Now
Renewal Fee	1 month
Agent Fee	1 month + tax
Other Info	Key Replacement Fee : JPY12,000 Tax not included / Guarantor Company : TBC / No Key Money / Free rent / Auto lock / Air-Con / Separated Toilet / Balcony / Penalty Fee for Early Cancellation / Musical Instrument Negotiable / CS/CATV / Flooring / Bathroom dryer / WIC

Building Information			
Completion	Jan, 2020	Earthquake Resistance	New
Structure	RC, 11 floors above		
Car Parking	N/A		
Bicycle Parking	for 1 space (Included)		
Music Instrument	Negotiable	Pet	
Facilities	Motorcycle Parking (TBC) / Within 20 min walk to Roppongi / Delivery box / Elevator / Newly-built (~7 y/o)		

Remarks
Renters Insurance : Required / Bicycle parking : Registration fee : JPY.1,000+tax / Pet:additional deposit (1 month)



HOUSEREP TOKYO INC.

ハウズレップトーキョー株式会社

#301, 1-4-15, Hiroo, Shibuya-ku, Tokyo 150-0012, Japan

+81 (0)3 6427 5860

inquiry@housserrep-tokyo.com

Transaction Type : Intermediate

Agent Fee : 1 month + tax

Website : www.housserrep-tokyo.com

