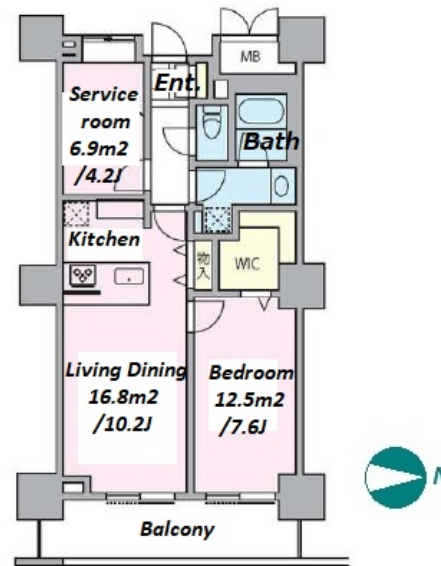


Property Name	ROYAL PARKS TOWER	Unit No.	TYPE	Access	Minamisennju Station on JR Joban Line (5 min) Minamisennju Station on Hibiya Line (5 min) Sennjuohashi Station on Keisei Main Line (19 min)
	MINAMISENJU	717	Apt.		
Address	4-7-3, Minamisennju, Arakawa-Ku, Tokyo				

## High Rise Tower Residence in Minamisennju



Lease Conditions			
LAYOUT	1 BR+Den		
SIZE	57.57 m²/619.67 ft²		
RENT	JPY 213,000 / month		
Management Fee	JPY 15,000/month		
Deposit	0.5 months	Key Money	0.5 months
Lease Term	Fixed term lease for 36 months		
Available	Now		
Renewal Fee	-		
Agent Fee	1 month + tax		
Other Info	Key Replacement Fee : JPY22,000 Tax not included / Guarantor Company : TBC / Auto lock / Air-Con / Separated Toilet / Balcony / Flooring / Floor Heating / Bathroom dryer / WIC		

Building Information			
Completion	May, 2008	Earthquake Resistance	New
Structure	RC, 39 floors above and 1 basement floors		
Car Parking	JPY19,950 + tax / month		
Bicycle Parking	N/A		
Music Instrument	-	Pet	Negotiable
Facilities	Motorcycle Parking (TBC) / Gym (( Included )) / Front desk / Delivery box		

Remarks
Renters Insurance : Required

\*The actual Layout & Size may differ slightly from this floor plans & pictures.



# HOUSEREP TOKYO INC.

ハウスレップトーキョー株式会社

#301, 1-4-15, Hiroo, Shibuya-ku, Tokyo 150-0012, Japan

+81 (0)3 6427 5860

inquiry@housserep-tokyo.com

Transaction Type : Intermediate

Agent Fee : 1 month + tax

Website : www.housserep-tokyo.com

