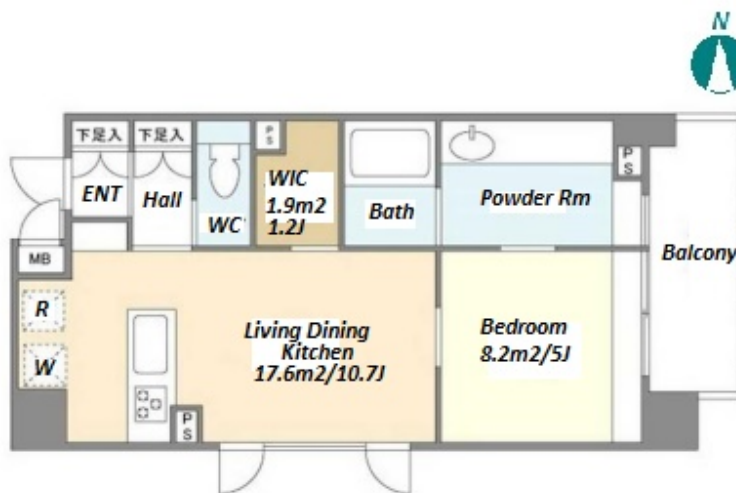
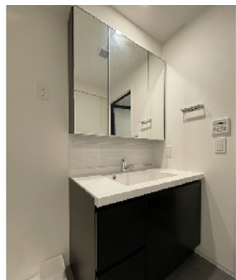


| | | | | | |
|---------------|----------------------------------|----------|------|--------|--|
| Property Name | ORSUS ASAKUSA | Unit No. | TYPE | Access | Asakusa Station on Tobu Isesaki Line (9 min) Asakusa Station on Ginza Line (11 min) |
| | | 802 | Apt. | | |
| Address | 6-22-7, Asakusa, Taito-Ku, Tokyo | | | | |

Mid rise apartment in TOKYO near Asakusa Sta.



| Lease Conditions | | | |
|------------------|---|-----------|---------|
| LAYOUT | 1 BR | | |
| SIZE | 40.75 m ² /438.62 ft ² | | |
| RENT | JPY 164,000 / month | | |
| Management Fee | JPY10,000/month | | |
| Deposit | 2 months | Key Money | 1 month |
| Lease Term | Standard lease for 24 months | | |
| Available | End, Aug, 2024 | | |
| Renewal Fee | 1 month | | |
| Agent Fee | 1 month + tax | | |
| Other Info | Key Replacement Fee : JPY20,000 Tax not included / Guarantor Company : TBC / Auto lock / Air-Con / Separated Toilet / Balcony / Internet Included / Flooring / Bathroom dryer / WIC | | |

| Building Information | | | |
|----------------------|--|-----------------------|-----|
| Completion | Feb, 2021 | Earthquake Resistance | New |
| Structure | RC, 8 floors above | | |
| Car Parking | - | | |
| Bicycle Parking | extra charge | | |
| Music Instrument | - | Pet | N/A |
| Facilities | Janitor / Delivery box / Elevator / Security / 24h Garbage Drop-off / Newly-built (~7 y/o) | | |

| Remarks | |
|--|--|
| Renters Insurance : Required / Bicycle parking : One-time registration fee: JPY3,000+tax | |

*The actual Layout & Size may differ slightly from this floor plans & pictures.



HOUSEREP TOKYO INC.

ハウズレップトーキョー株式会社

#301, 1-4-15, Hiroo, Shibuya-ku, Tokyo 150-0012, Japan

+81 (0)3 6427 5860

inquiry@housserrep-tokyo.com

Transaction Type : Intermediate

Agent Fee : 1 month + tax

Website : www.housserrep-tokyo.com

