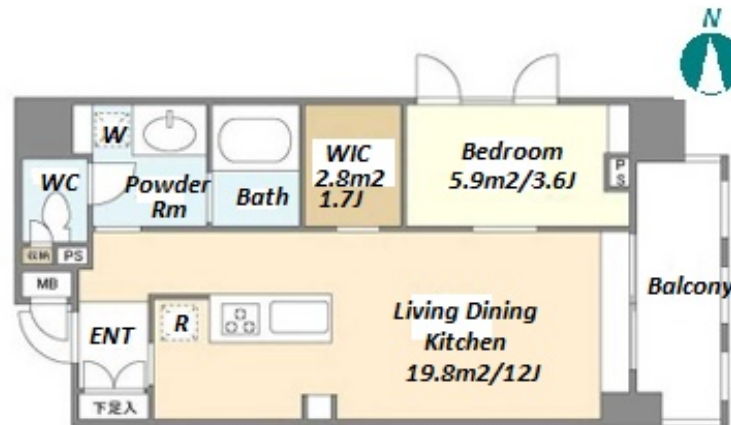
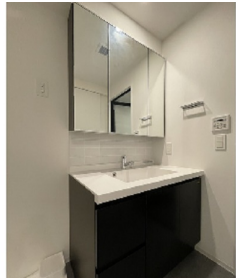


Property Name	ORSUS ASAKUSA	Unit No.	TYPE	Access	Asakusa Station on Tobu Isesaki Line (9 min) Asakusa Station on Ginza Line (11 min)
		501	Apt.		
Address	6-22-7, Asakusa, Taito-Ku, Tokyo				

Mid rise apartment in TOKYO near Asakusa Sta.



Lease Conditions	
LAYOUT	1 BR
SIZE	40.75 m²/438.62 ft²
RENT	JPY 165,000 / month
Management Fee	JPY10,000/month
Deposit	2 months
Key Money	1 month
Lease Term	Standard lease for 24 months
Available	End, Jul, 2024
Renewal Fee	1 month
Agent Fee	1 month + tax
Other Info	Key Replacement Fee : JPY20,000 Tax not included / Guarantor Company : TBC / Auto lock / Air-Con / Separated Toilet / Balcony / Internet Included / Flooring / Bathroom dryer / WIC

Building Information	
Completion	Feb, 2021
Earthquake Resistance	New
Structure	RC, 8 floors above
Car Parking	-
Bicycle Parking	extra charge
Music Instrument	-
Pet	N/A
Facilities	Janitor / Delivery box / Elevator / Security / 24h Garbage Drop-off / Newly-built (~7 y/o)

Remarks
Renters Insurance : Required / Bicycle parking : One-time registration fee: JPY3,000+tax

*The actual Layout & Size may differ slightly from this floor plans & pictures.



HOUSEREP TOKYO INC.

ハウズレップトーキョー株式会社

#301, 1-4-15, Hiroo, Shibuya-ku, Tokyo 150-0012, Japan

+81 (0)3 6427 5860

inquiry@housserrep-tokyo.com

Transaction Type : Intermediate

Agent Fee : 1 month + tax

Website : www.housserrep-tokyo.com

