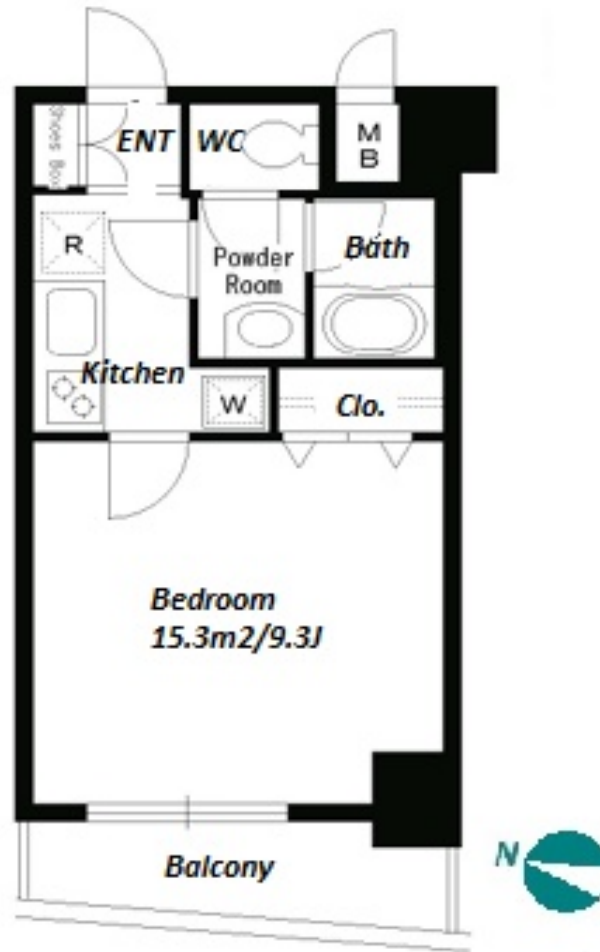


Property Name	PARK CUBE HONJO AZUMABASHI	Unit No.	TYPE	Access	Honjoadumabashi Station on Toei Asakusa Line (6 min) Asakusa Station on Ginza Line (14 min) Kinshichou Station on JR Chuo-Sobu Line (16 min)
		502	Apt.		
Address	4-19-4, Honjo, Sumida-Ku, Tokyo				



Lease Conditions

LAYOUT	Studio		
SIZE	29.1 m²/313.22 ft²		
RENT	JPY 102,000 / month		
Management Fee	JPY8,000/month		
Deposit	2 months	Key Money	1 month
Lease Term	Standard lease for 24 months		
Available	End, Jul, 2024		
Renewal Fee	1 month		
Agent Fee	1 month + tax		
Other Info	Key Replacement Fee : JPY15,000 Tax not included / Guarantor Company : TBC / Auto lock / Air-Con / Separated Toilet / Balcony / Penalty Fee for Early Cancellation / Musical Instrument Negotiable / Flooring / Bathroom dryer		

Building Information

Completion	Mar, 2006	Earthquake Resistance	New
Structure	RC, 10 floors above		
Car Parking	N/A		
Bicycle Parking	for 1 space (Included)		
Music Instrument	Negotiable	Pet	Allowed
Facilities	Motorcycle Parking (JPY3,000 + tax / month) / Delivery box / Elevator		

Remarks

Renters Insurance : Required / Bicycle parking : Registration sticker fee: JPY.2,000+tax / Pet:additional deposit (1 month) / Pet : a small dog or a cat

*The actual Layout & Size may differ slightly from this floor plans & pictures.



HOUSEREP TOKYO INC.

ハウスレップトーキョー株式会社

#301, 1-4-15, Hiroo, Shibuya-ku, Tokyo 150-0012, Japan

+81 (0)3 6427 5860

inquiry@housserrep-tokyo.com

Transaction Type : Intermediate

Agent Fee : 1 month + tax

Website : www.housserrep-tokyo.com

