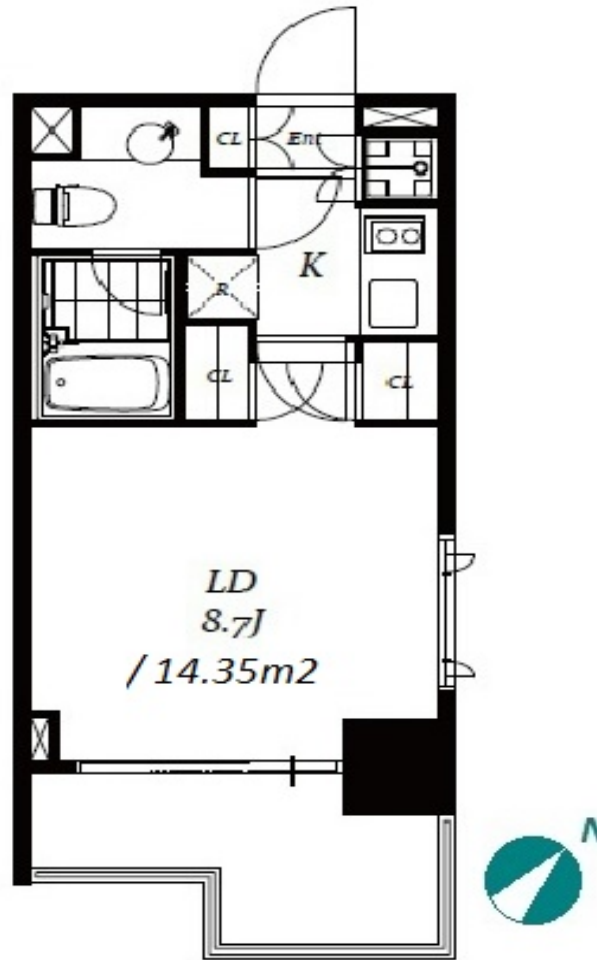
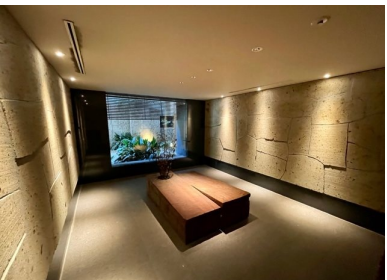


Property Name	CHESTER COURT OCHANOMIZU	Unit No.	TYPE	Access	Ogawamachi Station on Toei Shinjuku Line (3 min) Shinnochanomizu Station on Chiyoda Line (5 min) Awajichou Station on Marunouchi Line (6 min) Jinnbouchou Station on Hanzomon Line (6 min)
		804	Apt.		
Address	3-2, Kandaogawamachi, Chiyoda-Ku, Tokyo				

Modern Mid Rise Apt. in Kanda, near 4 Metro Stn.



*The actual Layout & Size may differ slightly from this floor plans & pictures.

Lease Conditions

LAYOUT	Studio	
SIZE	27.09 m ² /291.59 ft ²	
RENT	JPY 138,000 / month	
Management Fee	JPY10,000/month	
Deposit	2 months	Key Money -
Lease Term	Standard lease for 24 months	
Available	Negotiable	
Renewal Fee	1 month	
Agent Fee	1 month + tax	
Other Info	Key Replacement Fee : JPY18,000 Tax not included / Guarantor Company : TBC / Auto lock / Air-Con / Separated Toilet / Balcony / Flooring / Bathroom dryer / Corner Unit	

Building Information

Completion	Mar, 2007	Earthquake Resistance	New
Structure	SRC, 14 floors above		
Car Parking	extra charge		
Bicycle Parking	JPY300/ month		
Music Instrument	-	Pet	
Facilities	Motorcycle Parking (extra charge) / Delivery box / Elevator / Close to Station		

Remarks

Renters Insurance : Required / Pet:additional deposit (1 month)



HOUSEREP TOKYO INC.

ハウズレップトーキョー株式会社

#301, 1-4-15, Hiroo, Shibuya-ku, Tokyo 150-0012, Japan

+81 (0)3 6427 5860

inquiry@housserrep-tokyo.com

Transaction Type : Intermediate

Agent Fee : 1 month + tax

Website : www.housserrep-tokyo.com

