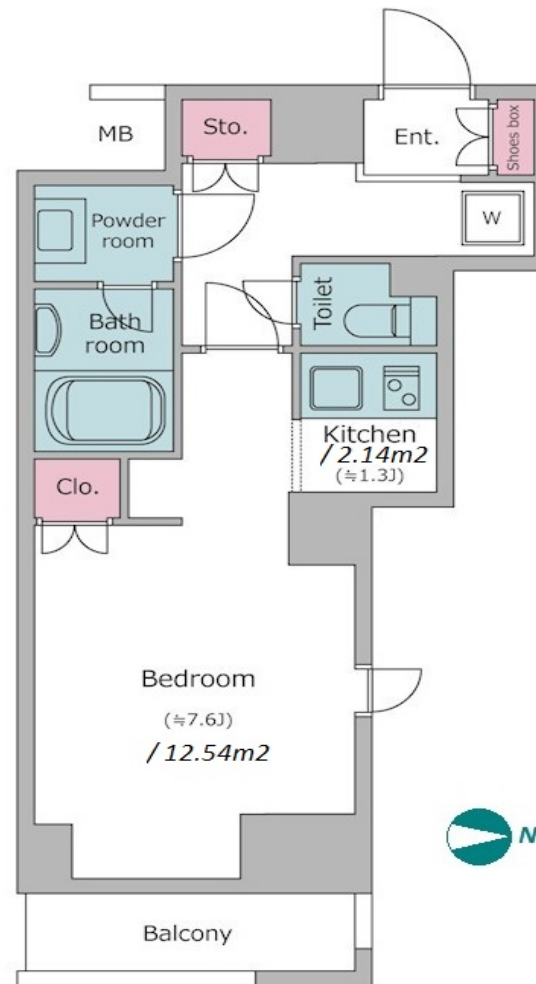


Property Name	RESIDIA KUDANSHITA	Unit No.	TYPE	Access	Jinnbouchou Station on Hanzomon Line (2 min) Jinnbouchou Station on Mita Line (2 min) Kudannshita Station on Tozai Line (6 min)
		507	Apt.		
Address	2-23-2, Kandajimbocho, Chiyoda-Ku, Tokyo				

Stylish Mid Rise Apt. in Jimbocho



*The actual Layout & Size may differ slightly from this floor plans & pictures.

Lease Conditions	
LAYOUT	Studio
SIZE	28.69 m ² /308.81 ft ²
RENT	JPY 130,000 / month
Management Fee	JPY10,000/month
Deposit	2 months
Key Money	-
Lease Term	Standard lease for 24 months
Available	Now
Renewal Fee	1 month
Agent Fee	1 month + tax
Other Info	Key Replacement Fee : JPY18,000 Tax not included / Auto lock / Air-Con / Separated Toilet / Balcony / Flooring / Bathroom dryer / Corner Unit

Building Information			
Completion	Mar, 2004	Earthquake Resistance	New
Structure	SRC, 13 floors above		
Car Parking	-		
Bicycle Parking	(Included)		
Music Instrument	-	Pet	-
Facilities	Within 20 min to Tokyo station by car / Delivery box / Elevator / Close to Station / 24h Garbage Drop-off		

Remarks
Renters Insurance : Required / Tenant support fee: 11,000yen/2years, Wi-fi fee: 2,200yen/month / Bicycle parking : Registration fee: 3,300yen



HOUSEREP TOKYO INC.

ハウスレップトーキョー株式会社

#301, 1-4-15, Hiroo, Shibuya-ku, Tokyo 150-0012, Japan

+81 (0)3 6427 5860

inquiry@housserrep-tokyo.com

Transaction Type : Intermediate

Agent Fee : 1 month + tax

Website : www.housserrep-tokyo.com

