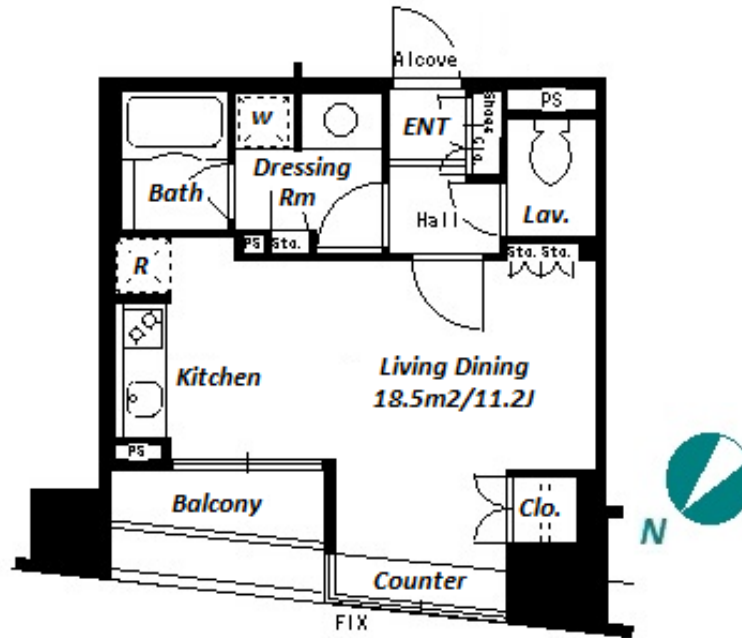


Property Name	PARK AXIS NIHONBASHI STAGE	Unit No.	TYPE	Access	Ninngyouchou Station on Hibiya Line (8 min) Hacchoubori Station on JR Keiyo Line (16 min)
		315	Apt.		
Address	1-37-12, Nihombashikakigaracho, Chuo-Ku, Tokyo				

## Stylish Apt. in Nihonbashi, near Tokyo Sta. & Shopping Area



Lease Conditions			
LAYOUT	Studio		
SIZE	32.27 m²/347.35 ft²		
RENT	JPY 139,000 / month		
Management Fee	-		
Deposit	2 months	Key Money	1 month
Lease Term	Standard lease for 24 months		
Available	End, Jul, 2024		
Renewal Fee	1 month		
Agent Fee	1 month + tax		
Other Info	Key Replacement Fee : JPY15,000 Tax not included / Guarantor Company : TBC / Auto lock / Air-Con / Separated Toilet / Balcony / Internet (Extra Charge) / Musical Instrument Negotiable / CS/CATV / Flooring / Bathroom dryer		

Building Information			
Completion	Aug, 2004	Earthquake Resistance	New
Structure	RC, 14 floors above		
Car Parking	TBC		
Bicycle Parking	for 1 space ( Included )		
Music Instrument	Negotiable	Pet	-
Facilities	Motorcycle Parking (TBC) / Within 20 min to Tokyo station by car / Front desk / Janitor / Delivery box / Elevator / Security / 24h Garbage Drop-off		

Remarks
Renters Insurance : Required / Bicycle parking : Registration fee: 2,200yen / Room cleaning JPY.40,000+tax at the end of tenancy

\*The actual Layout & Size may differ slightly from this floor plans & pictures.



# HOUSEREP TOKYO INC.

ハウズレップトーキョー株式会社

#301, 1-4-15, Hiroo, Shibuya-ku, Tokyo 150-0012, Japan

+81 (0)3 6427 5860

inquiry@housserrep-tokyo.com

Transaction Type : Intermediate

Agent Fee : 1 month + tax

Website : www.housserrep-tokyo.com

