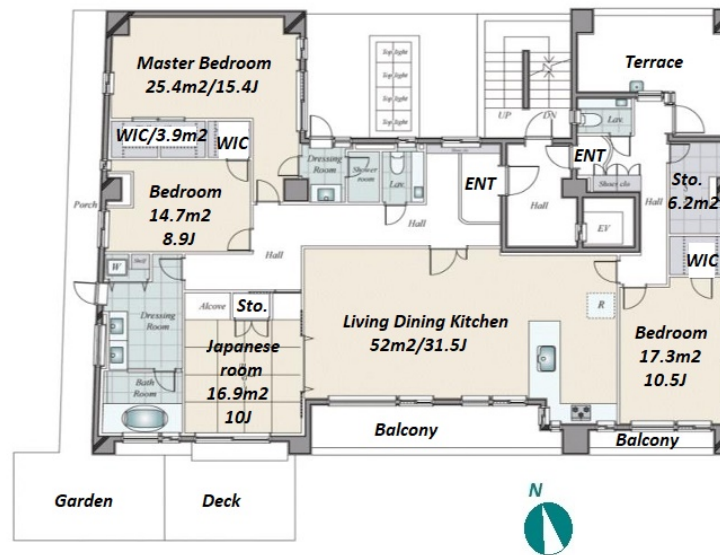
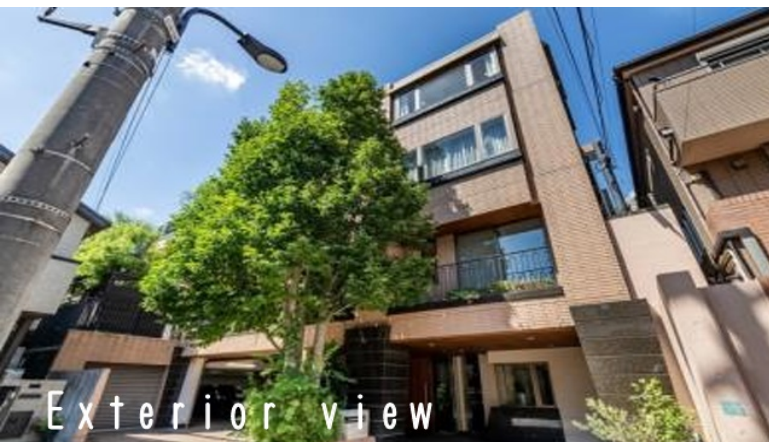


Property Name	LA ATRE MUJIRO TERRACE	Unit No.	TYPE	Access	Zoushigaya Station on Fukutoshin Line (4 min) Gakushuinshita Station on Toden Arawaka Line (6 min) Mejiro Station on JR Yamanote Line (13 min)
		1F	Apt.		
Address	2-18-6, Takada, Toshima-Ku, Tokyo				



Lease Conditions	
LAYOUT	4 BR
SIZE	208.54 m <sup>2</sup> /2244.7 ft <sup>2</sup>
RENT	JPY 900,000 / month
Management Fee	-
Deposit	2 months
Key Money	1 month
Lease Term	Fixed term lease for 60 months
Available	Now
Renewal Fee	-
Agent Fee	1 month + tax
Other Info	Auto lock / Air-Con / Separated Toilet / Balcony / Internet (Extra Charge) / Flooring / Floor Heating / Dishwasher / Oven / Bathroom dryer / WIC / 2 Toilets / Private Yard

Building Information	
Completion	Oct, 1998
Earthquake Resistance	New
Structure	RC, 3 floors above and 1 basement floors
Car Parking	for 2 spaces ( Included )
Bicycle Parking	-
Music Instrument	-
Pet	Allowed
Facilities	Trunk Room (( Included )) / Delivery box / Elevator / Low-rise

Remarks
Renters Insurance : Required / Pet:additional deposit ( 1 month )

\*The actual Layout & Size may differ slightly from this floor plans & pictures.



HOUSEREP TOKYO INC.

ハウスレップトーキョー株式会社

#301, 1-4-15, Hiroo, Shibuya-ku, Tokyo 150-0012, Japan

+81 (0)3 6427 5860

inquiry@housserep-tokyo.com

Transaction Type : Intermediate

Agent Fee : 1 month + tax

Website : www.housserep-tokyo.com

