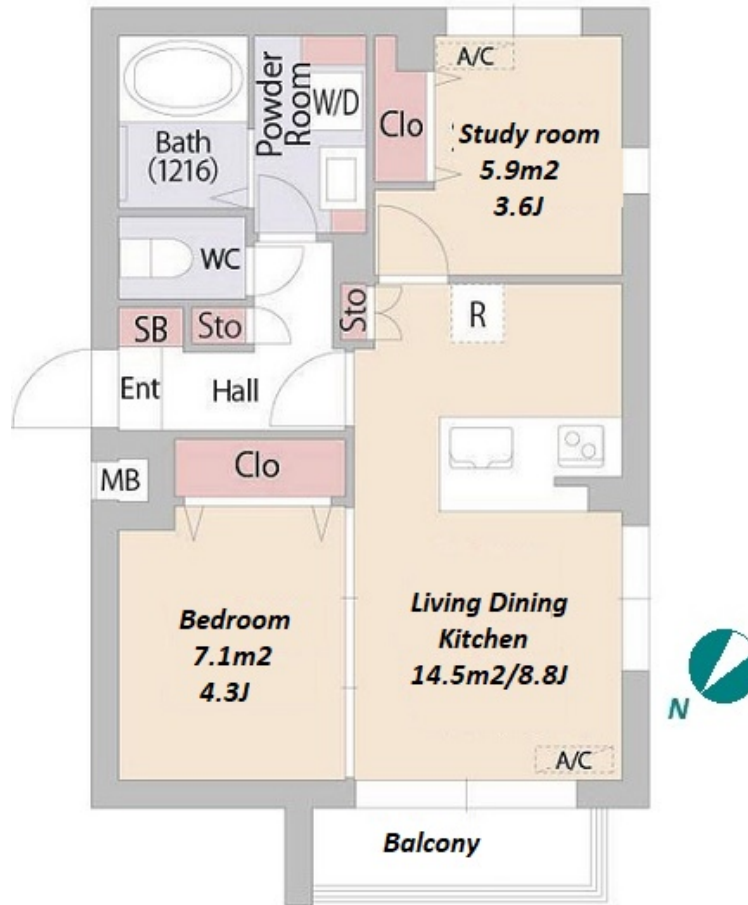


Property Name	COMPOSITE MEGUROGAKUGEIDAIGAKU THE PARK	Unit No.	TYPE	Access	Gakugeidaigaku Station on Toyoko Line (14 min)
	Address	2-12-1, Megurohoncho, Meguro-Ku, Tokyo	301		



*The actual Layout & Size may differ slightly from this floor plans & pictures.

Lease Conditions		
LAYOUT	1 BR+S	
SIZE	40.5 m ² /435.93 ft ²	
RENT	JPY 175,000 / month	
Management Fee	JPY15,000/month	
Deposit	2 months	Key Money 1 month
Lease Term	Standard lease for 24 months	
Available	End, Aug, 2024	
Renewal Fee	1 month	
Agent Fee	1 month + tax	
Other Info	Key Replacement Fee : JPY20,000 Tax not included / Auto lock / Air-Con / Balcony / Internet Included / CS/CATV / Flooring / Bathroom dryer / Corner Unit	

Building Information		
Completion	Mar, 2023	Earthquake Resistance New
Structure	RC, 4 floors above	
Car Parking	-	
Bicycle Parking	for 1 space (Included)	
Music Instrument	-	Pet Negotiable
Facilities	Delivery box / Elevator / Low-rise / Newly-built (~7 y/o)	

Remarks
Renters Insurance : Required



HOUSEREP TOKYO INC.

ハウスレップトーキョー株式会社

#301, 1-4-15, Hiroo, Shibuya-ku, Tokyo 150-0012, Japan

+81 (0)3 6427 5860

inquiry@housserrep-tokyo.com

Transaction Type : Intermediate

Agent Fee : 1 month + tax

Website : www.housserrep-tokyo.com

