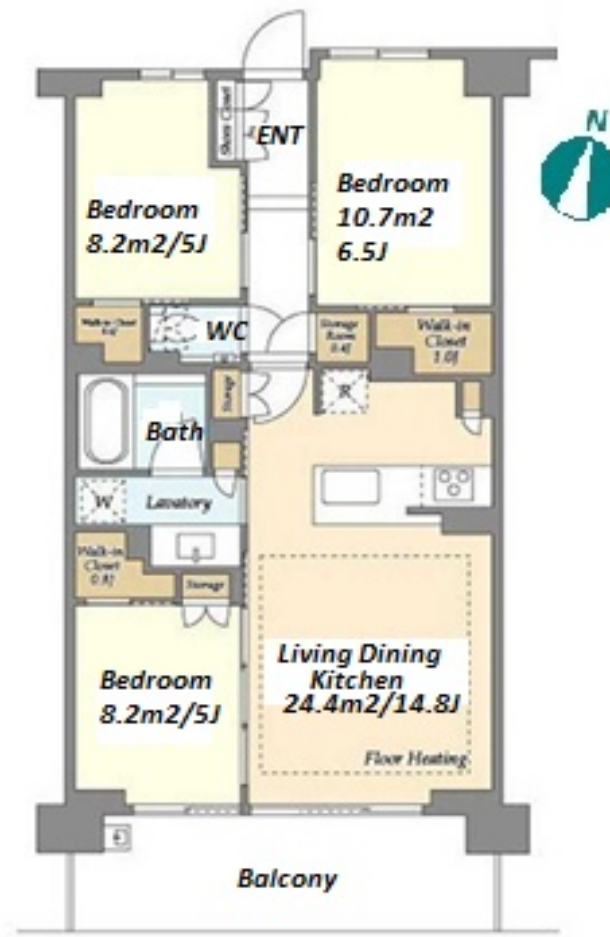


Property Name	DUE MACHIYA	Unit No.	TYPE	Access	Machiya Station on Chiyoda Line (10 min)
		704	Apt.		
Address	8-12-1, Machiya, Arakawa-Ku, Tokyo				



*The actual Layout & Size may differ slightly from this floor plans & pictures.

Lease Conditions			
LAYOUT	3 BR		
SIZE	70.11 m²/754.65 ft²		
RENT	JPY 244,000 / month		
Management Fee	JPY15,000/month		
Deposit	1 month	Key Money	1 month
Lease Term	Standard lease for 24 months		
Available	Now		
Renewal Fee	1 month		
Agent Fee	1 month + tax		
Other Info	Auto lock / Air-Con / Separated Toilet / Balcony / Internet Included / Penalty Fee for Early Cancellation / No Smoking / Flooring / Floor Heating / Dishwasher / Bathroom dryer / WIC		

Building Information			
Completion	Jan, 2024	Earthquake Resistance	New
Structure	RC, 8 floors above		
Car Parking	JPY23,500 + tax / month		
Bicycle Parking	(Included)		
Music Instrument	-	Pet	Negotiable
Facilities	Motorcycle Parking (JPY3,000 + tax / month) / Janitor / Delivery box / Elevator / Security / 24h Garbage Drop-off / Newly-built (~1 y/o)		

Remarks	
Renters Insurance : Required / Room Cleaning: JPY 68,800+tax (when moving out) / AC Cleaning: JPY20,000+tax (when moving out)	



HOUSEREP TOKYO INC.

ハウスレップトーキョー株式会社

#301, 1-4-15, Hiroo, Shibuya-ku, Tokyo 150-0012, Japan

+81 (0)3 6427 5860

inquiry@housserrep-tokyo.com

Transaction Type : Intermediate

Agent Fee : 1 month + tax

Website : www.housserrep-tokyo.com

