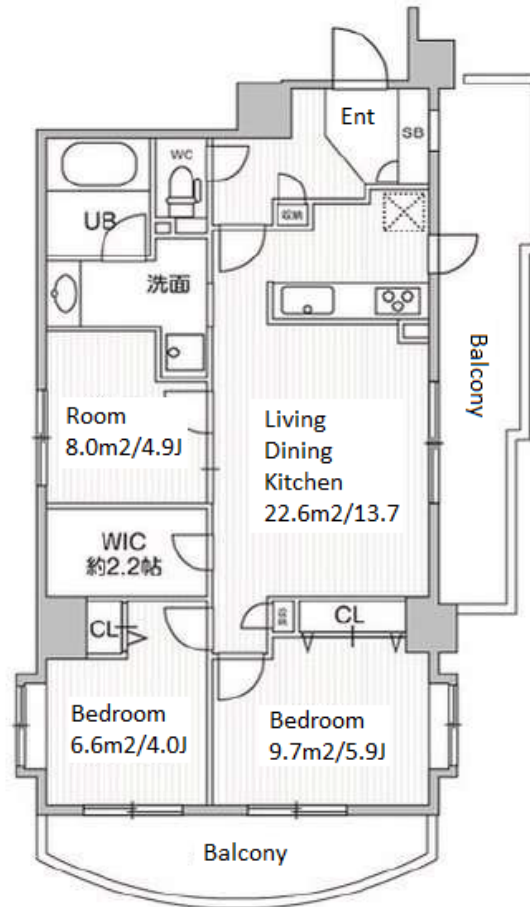
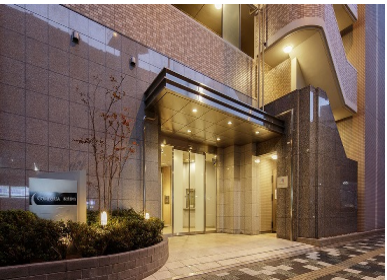


Property Name	COMFORIA ITABASHI NAKAJUKU	Unit No.	TYPE	Access	Itabashikuyakushomae Station on Mita Line (2 min)
	Address	62-2, Nakajuku, Itabashi-Ku, Tokyo	808		

Mid-rise Apt. in Itabashi, easy access to Sugamo / Otemachi / Meguro



Lease Conditions		
LAYOUT	2 BR+S	
SIZE	71.28 m²/767.25 ft²	
RENT	JPY 231,000 / month	
Management Fee	JPY15,000/month	
Deposit	1 month	Key Money -
Lease Term	Standard lease for 24 months	
Available	Now	
Renewal Fee	1 month	
Agent Fee	1 month + tax	
Other Info	Key Replacement Fee : JPY30,000 Tax not included / Guarantor Company : TBC / Auto lock / Renovated / Air-Con / Separated Toilet / Balcony / Internet (Extra Charge) / Flooring / Floor Heating / Bathroom dryer / Corner Unit	

Building Information			
Completion	Mar, 2006	Earthquake Resistance	New
Structure	SRC, 14 floors above		
Car Parking	TBC		
Bicycle Parking	extra charge		
Music Instrument	-	Pet	-
Facilities	Motorcycle Parking (extra charge) / Trunk Room (TBC) / Janitor / Delivery box / Elevator		

Remarks
Renters Insurance : Required

*The actual Layout & Size may differ slightly from this floor plans & pictures.



HOUSEREP TOKYO INC.

ハウスレップトーキョー株式会社

#301, 1-4-15, Hiroo, Shibuya-ku, Tokyo 150-0012, Japan

+81 (0)3 6427 5860

inquiry@housserrep-tokyo.com

Transaction Type : Intermediate

Agent Fee : 1 month + tax

Website : www.housserrep-tokyo.com

