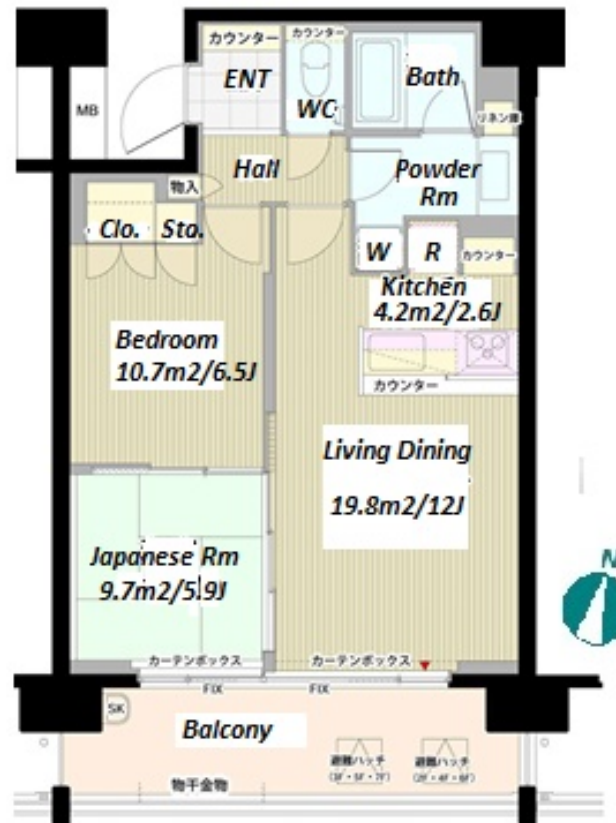
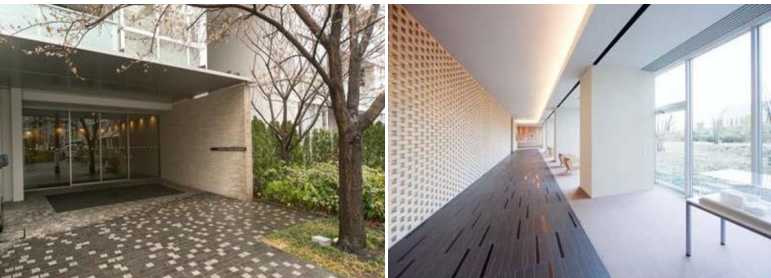


Property Name	GARDENIER KINUTA RESIDENCE	Unit No.	TYPE	Access	Soshigaya-okura Station on Odakyu Line (10 min) Chitosefunabashi Station on Odakyu Line (10 min)
		305	Apt.		
Address	2-14-12, Kinuta, Setagaya-Ku, Tokyo				

Low Rise Apt. at Complex Bldgs. w/ Facilities, near "Seijo"



Lease Conditions	
LAYOUT	2 BR
SIZE	61.78 m <sup>2</sup> /664.99 ft <sup>2</sup>
RENT	JPY 224,000 / month
Management Fee	JPY10,000/month
Deposit	2 months
Key Money	2 months
Lease Term	Standard lease for 24 months
Available	Early, Jul, 2024
Renewal Fee	1 month
Agent Fee	1 month + tax
Other Info	Key Replacement Fee : JPY20,000 Tax not included / Guarantor Company : TBC / Auto lock / Air-Con / Separated Toilet / Balcony / Musical Instrument Negotiable / Flooring / Floor Heating / Bathroom dryer

Building Information	
Completion	Feb, 2008
Earthquake Resistance	New
Structure	RC, 10 floors above and 1 basement floors
Car Parking	TBC
Bicycle Parking	for 1 space ( Included )
Music Instrument	Negotiable
Pet	Allowed
Facilities	Motorcycle Parking (JPY8,000 + tax / month) / Gym (( Included )) / Near Large Parks / Front desk / Janitor / Delivery box / Elevator

Remarks
Renters Insurance : Required / Pet:additional deposit ( 1 month ) / Pet : up to two small dogs/ No cat

\*The actual Layout & Size may differ slightly from this floor plans & pictures.



HOUSEREP TOKYO INC.

ハウズレップトーキョー株式会社

#301, 1-4-15, Hiroo, Shibuya-ku, Tokyo 150-0012, Japan

+81 (0)3 6427 5860

inquiry@housserrep-tokyo.com

Transaction Type : Intermediate

Agent Fee : 1 month + tax

Website : www.housserrep-tokyo.com

