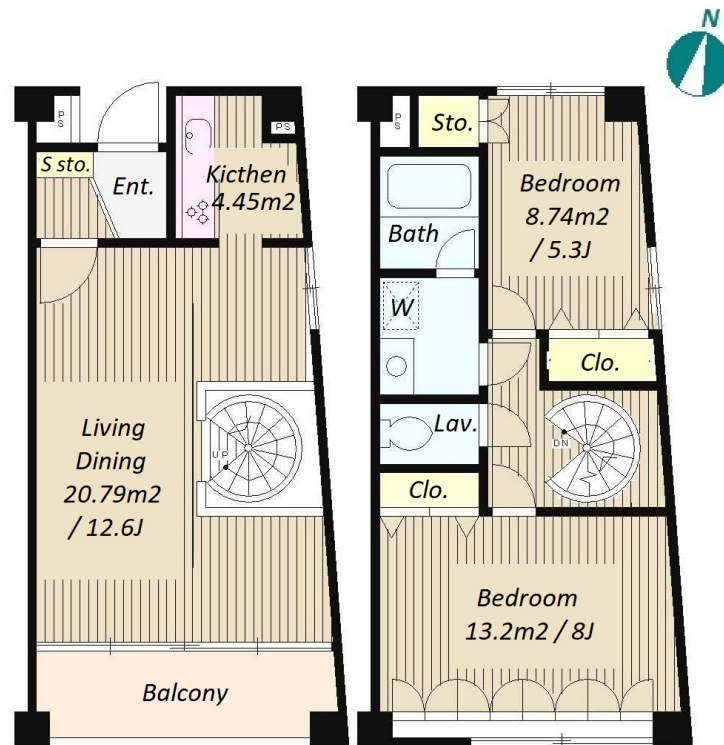


Property Name	PARK EAST YOYOGI	Unit No.	TYPE	Access	Yoyogihachimann Station on Odakyu Line (7 min) Yoyogikouenn Station on Chiyoda Line (7 min)
		204	Apt.		
Address	1-30-27, Tomigaya, Shibuya-Ku, Tokyo				

Cozy Low Rise Apartment in Yoyogikoen - Shibuya area



Lease Conditions

LAYOUT	2 BR	
SIZE	69.53 m²/748.41 ft²	
RENT	JPY 260,000 / month	
Management Fee	JPY10,000/month	
Deposit	2 months	Key Money 1 month
Lease Term	Standard lease for 24 months	
Available	Mid, Jun, 2024	
Renewal Fee	1 month	
Agent Fee	1 month + tax	
Other Info	Key Replacement Fee : JPY20,000 Tax not included / Guarantor Company : TBC / Auto lock / Air-Con / Separated Toilet / Balcony / Loft/Maisonnette / Musical Instrument Negotiable / Flooring	

Building Information

Completion	Jan, 1998	Earthquake Resistance	New
Structure	RC, 3 floors above		
Car Parking	N/A		
Bicycle Parking	for 1 space (Included)		
Music Instrument	Negotiable	Pet	-

Facilities

Remarks

Renters Insurance : Required

*The actual Layout & Size may differ slightly from this floor plans & pictures.



HOUSEREP TOKYO INC.

ハウズレップトーキョー株式会社

#301, 1-4-15, Hiroo, Shibuya-ku, Tokyo 150-0012, Japan

+81 (0)3 6427 5860

inquiry@housserrep-tokyo.com

Transaction Type : Intermediate

Agent Fee : 1 month + tax

Website : www.housserrep-tokyo.com

