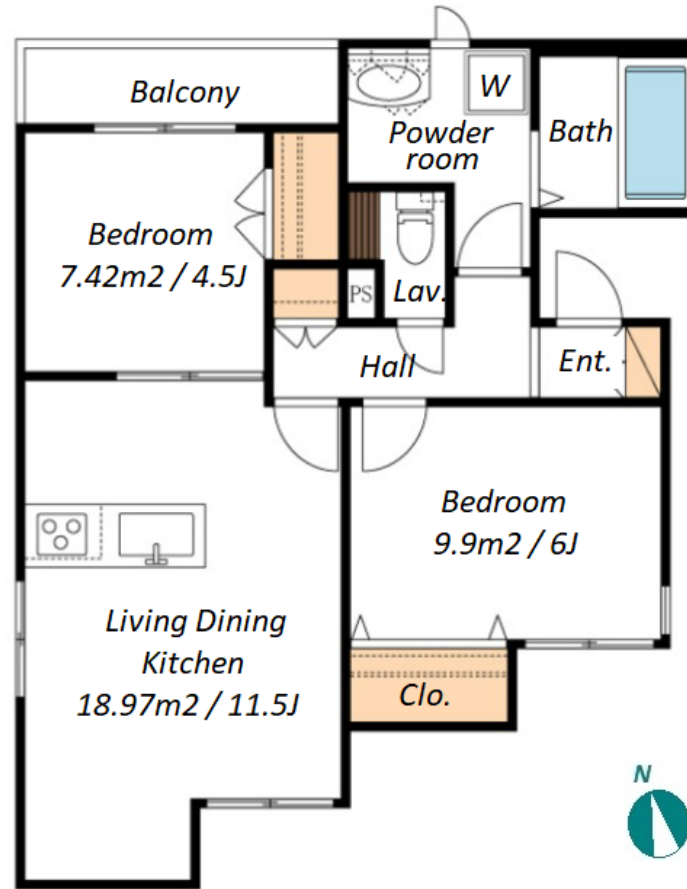
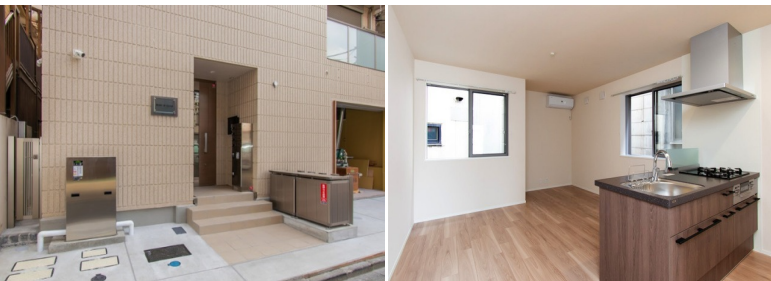
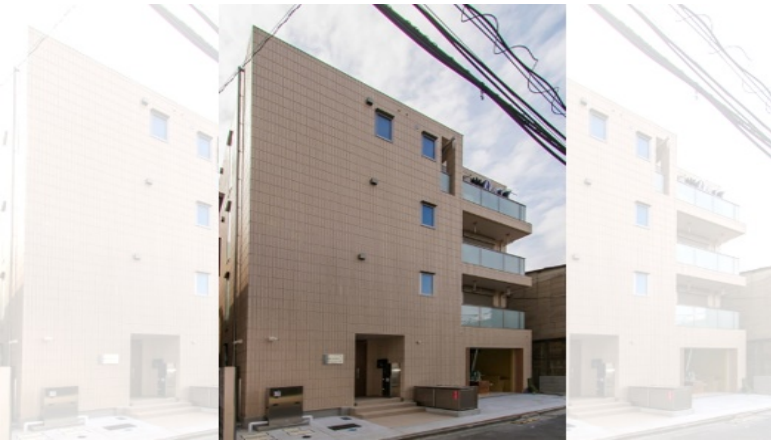


Property Name	MAISON DE GLYCINE	Unit No.	TYPE	Access	Shirokanetakanawa Station on Namboku Line (5 min) Shirokanetakanawa Station on Mita Line (5 min) Shirokanedai Station on Namboku Line (15 min)
		201	Apt.		
Address	1-7-9, Shirokane, Minato-Ku, Tokyo				

Stylish Low Rise Apt. in Shirokane



*The actual Layout & Size may differ slightly from this floor plans & pictures.

Lease Conditions			
LAYOUT	2 BR		
SIZE	58.12 m²/625.59 ft²		
RENT	JPY 250,000 / month		
Management Fee	JPY4,500/month		
Deposit	2 months	Key Money	2 months
Lease Term	Standard lease for 24 months		
Available	Now		
Renewal Fee	1 month		
Agent Fee	1 month + tax		
Other Info	Guarantor Company : TBC / Auto lock / Separated Toilet / Balcony / Flooring / Bathroom dryer / Corner Unit		

Building Information			
Completion	Feb, 2023	Earthquake Resistance	New
Structure	ALC, 4 floors above		
Car Parking	N/A		
Bicycle Parking	TBC		
Music Instrument	-	Pet	N/A
Facilities	Within 20 min to Roppongi by train / Janitor / Delivery box / Elevator / Close to Station / Low-rise / Newly-built (~1 y/o)		

Remarks
Renters Insurance : Required



HOUSEREP TOKYO INC.

ハウズレップトーキョー株式会社

#301, 1-4-15, Hiroo, Shibuya-ku, Tokyo 150-0012, Japan

+81 (0)3 6427 5860

inquiry@housserrep-tokyo.com

Transaction Type : Intermediate

Agent Fee : 1 month + tax

Website : www.housserrep-tokyo.com

