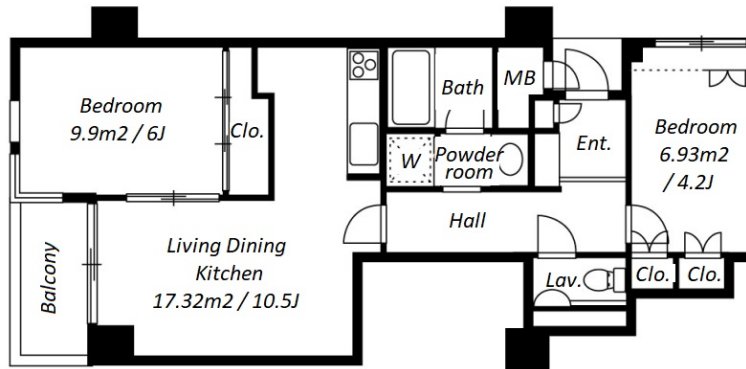


Property Name	GARDEN HOMES SHIROKANE	Unit No.	TYPE	Access	Shirokanetakanawa Station on Namboku Line (6 min) Shirokanedai Station on Namboku Line (6 min) Takanawadai Station on Toei Asakusa Line (14 min)
		1205	Apt.		
Address	2-5-12, Shirokane, Minato-Ku, Tokyo				

Cozy Mid Rise Apt. in Shirokane



*The actual Layout & Size may differ slightly from this floor plans & pictures.

Lease Conditions	
LAYOUT	2 BR
SIZE	52.47 m²/564.78 ft²
RENT	JPY 235,000 / month
Management Fee	JPY10,000/month
Deposit	2 months
Key Money	1 month
Lease Term	Standard lease for 24 months
Available	Now
Renewal Fee	1 month
Agent Fee	1 month + tax
Other Info	Guarantor Company : TBC / Auto lock / Air-Con / Separated Toilet / Balcony / Internet (Extra Charge) / Flooring / Carpet / Bathroom dryer

Building Information	
Completion	Apr, 2001
Earthquake Resistance	New
Structure	RC, 7 floors above and 2 basement floors
Car Parking	TBC
Bicycle Parking	TBC
Music Instrument	-
Pet	N/A
Facilities	Motorcycle Parking (TBC) / Janitor / Delivery box / Elevator / 24h Garbage Drop-off

Remarks
Renters Insurance : Required



HOUSEREP TOKYO INC.

ハウスレップトーキョー株式会社

#301, 1-4-15, Hiroo, Shibuya-ku, Tokyo 150-0012, Japan

+81 (0)3 6427 5860

inquiry@housserrep-tokyo.com

Transaction Type : Intermediate

Agent Fee : 1 month + tax

Website : www.housserrep-tokyo.com

