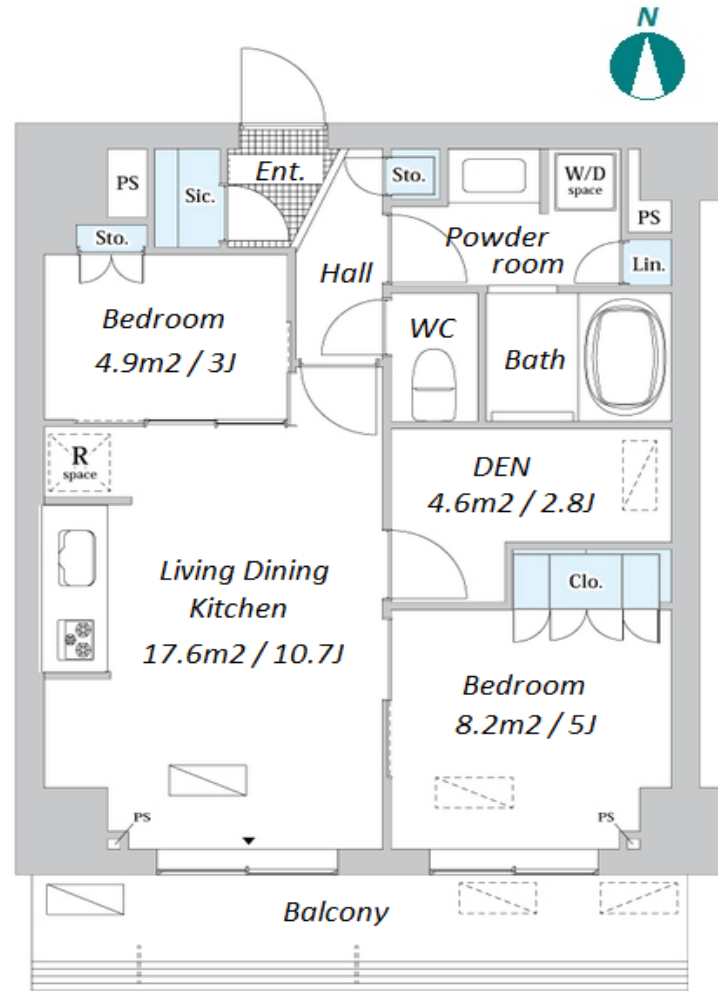


Property Name	JP NOIE KINSHICHO	Unit No.	TYPE	Access	Kinshichou Station on JR Chuo-Sobu Line (9 min) Kinshichou Station on Hanzomon Line (9 min) Ryougoku Station on Oedo Line (11 min)
		702	Apt.		
Address	4-15-18, Kamezawa, Sumida-Ku, Tokyo				

Modern Apt. near lively Kinshicho district



*The actual Layout & Size may differ slightly from this floor plans & pictures.

Lease Conditions	
LAYOUT	2 BR+Den
SIZE	50.36 m²/542.07 ft²
RENT	JPY 215,000 / month
Management Fee	JPY15,000/month
Deposit	2 months
Key Money	-
Lease Term	Standard lease for 24 months
Available	Now
Renewal Fee	1 month
Agent Fee	1 month + tax
Other Info	Key Replacement Fee : JPY20,000 Tax not included / Guarantor Company : TBC / No Key Money / Auto lock / Air-Con / Separated Toilet / Balcony / Penalty Fee for Early Cancellation / CS/CATV / Flooring / IH Stoves / Bathroom dryer

Building Information			
Completion	Aug, 2021	Earthquake Resistance	New
Structure	RC, 9 floors above		
Car Parking	N/A		
Bicycle Parking	for 1 space (Included)		
Music Instrument	-	Pet	N/A
Facilities	Motorcycle Parking (TBC) / Trunk Room (TBC) / Near Large Parks / Janitor / Delivery box / Elevator		

Remarks
Renters Insurance : Required



HOUSEREP TOKYO INC.

ハウズレップトーキョー株式会社

#301, 1-4-15, Hiroo, Shibuya-ku, Tokyo 150-0012, Japan

+81 (0)3 6427 5860 inquiry@housserep-tokyo.com

Transaction Type : Intermediate

Agent Fee : 1 month + tax

Website : www.housserep-tokyo.com

