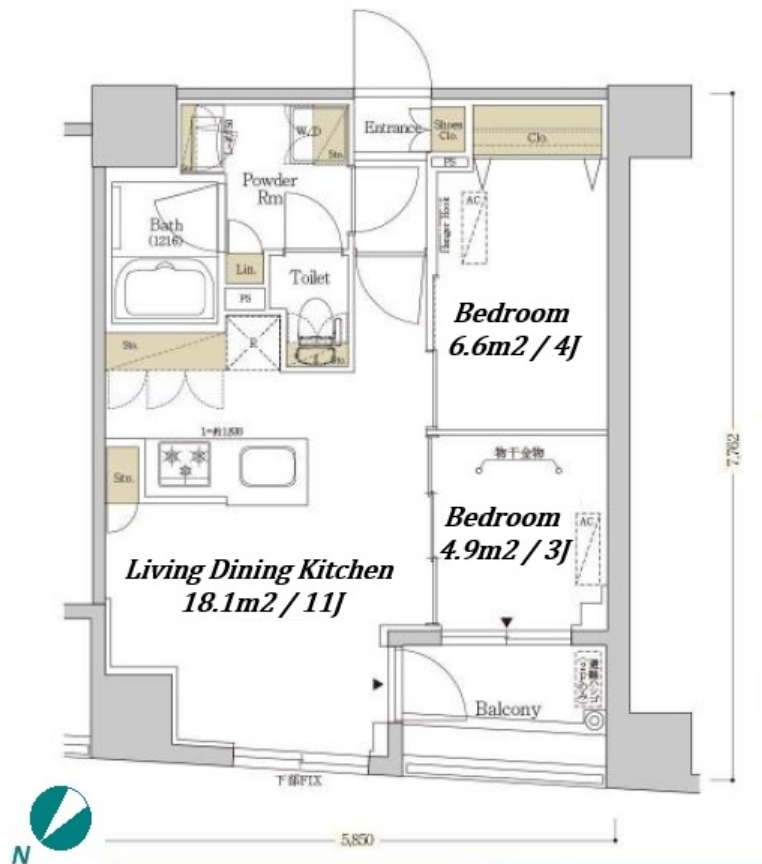


Property Name	URBANEX NIHONBASHI SUITENGU	Unit No.	TYPE	Access	Suitennguumae Station on Hanzomon Line (3 min) Ninngyouchou Station on Hibiya Line (5 min) Kayabachou Station on Tozai Line (6 min)
		702	Apt.		
Address	1-18-4, Nihombashikakigaracho, Chuo-Ku, Tokyo				

Stylish Mid Rise Apt. in Nihonbashi, near Suitengu and Ningyocho stn.



*The actual Layout & Size may differ slightly from this floor plans & pictures.

Lease Conditions		
LAYOUT	2 BR	
SIZE	40.57 m ² /436.69 ft ²	
RENT	JPY 225,000 / month	
Management Fee	JPY15,000/month	
Deposit	2 months	Key Money -
Lease Term	Standard lease for 24 months	
Available	End, Jun, 2024	
Renewal Fee	1 month	
Agent Fee	1 month + tax	
Other Info	Key Replacement Fee : JPY20,000 Tax not included / Guarantor Company : TBC / No Key Money / Auto lock / Air-Con / Separated Toilet / Balcony / Penalty Fee for Early Cancellation / Flooring / Bathroom dryer	

Building Information			
Completion	Jan, 2020	Earthquake Resistance	New
Structure	RC, 10 floors above		
Car Parking	TBC		
Bicycle Parking	JPY500 + tax / month		
Music Instrument	-	Pet	N/A
Facilities	Janitor / Delivery box / Elevator / Security / Close to Station / Newly-built (~7 y/o)		

Remarks
Renters Insurance : Required



HOUSEREP TOKYO INC.

ハウスレップトーキョー株式会社

#301, 1-4-15, Hiroo, Shibuya-ku, Tokyo 150-0012, Japan

+81 (0)3 6427 5860

inquiry@housserep-tokyo.com

Transaction Type : Intermediate

Agent Fee : 1 month + tax

Website : www.housserep-tokyo.com

