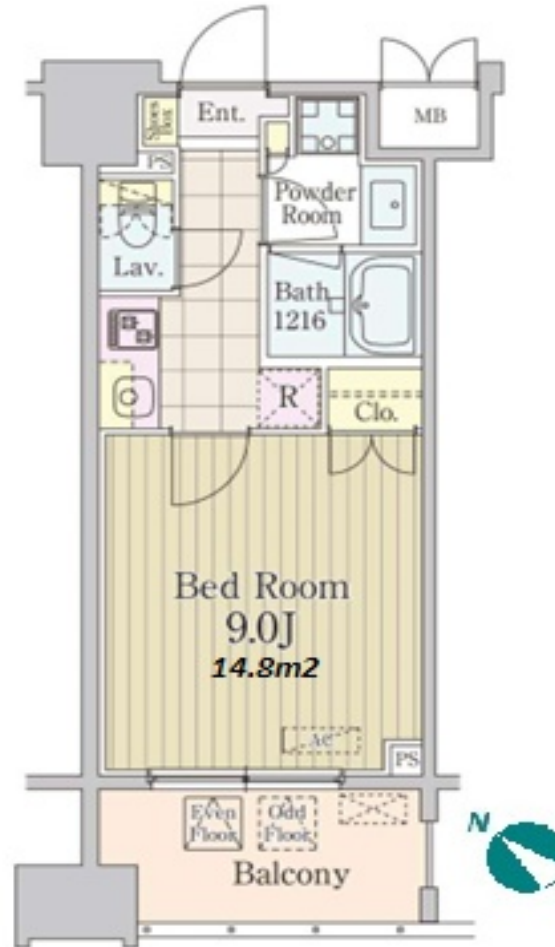
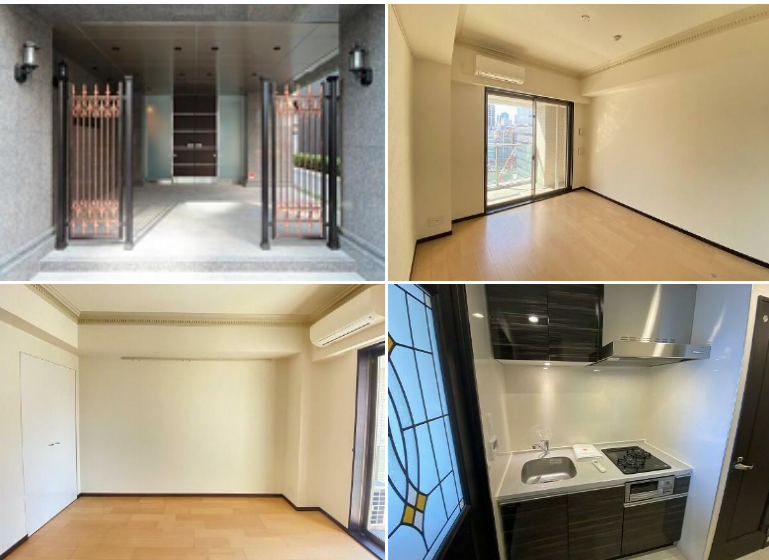


Property Name	GRAND PALACE TOKYO YAESU AVENUE	Unit No.	TYPE	Access	Hacchoubori Station on JR Keiyo Line (5 min) Hacchoubori Station on Hibiya Line (9 min)
		608	Apt.		
Address	2-29-3, Shinkawa, Chuo-Ku, Tokyo				

## Grand European Style Apt. in "Hatchobori"



Lease Conditions		
LAYOUT	Studio	
SIZE	28.8 m <sup>2</sup> /310 ft <sup>2</sup>	
RENT	JPY 132,000 / month	
Management Fee	JPY10,000/month	
Deposit	2 months	Key Money 1 month
Lease Term	Standard lease for 24 months	
Available	End, Jul, 2024	
Renewal Fee	1 month	
Agent Fee	1 month + tax	
Other Info	Key Replacement Fee : JPY20,000 Tax not included / Guarantor Company : TBC / Auto lock / Air-Con / Separated Toilet / Balcony / Internet Included / Penalty Fee for Early Cancellation / CS/CATV / Flooring / Bathroom dryer	

Building Information		
Completion	Jun, 2016	Earthquake Resistance New
Structure	RC, 11 floors above	
Car Parking	JPY36,000 + tax / month	
Bicycle Parking	for 1 space ( Included )	
Music Instrument	-	Pet -
Facilities	Motorcycle Parking (TBC) / Within 20 min to Roppongi by train / Within 20 min to Tokyo station by car / Near Large Parks / Janitor / Delivery box / Elevator / Security	

Remarks
Renters Insurance : Required

\*The actual Layout &amp; Size may differ slightly from this floor plans &amp; pictures.



HOUSEREP TOKYO INC.

ハウスレップトーキョー株式会社

#301, 1-4-15, Hiroo, Shibuya-ku, Tokyo 150-0012, Japan

+81 (0)3 6427 5860

inquiry@housserrep-tokyo.com

Transaction Type : Intermediate

Agent Fee : 1 month + tax

Website : www.housserrep-tokyo.com

