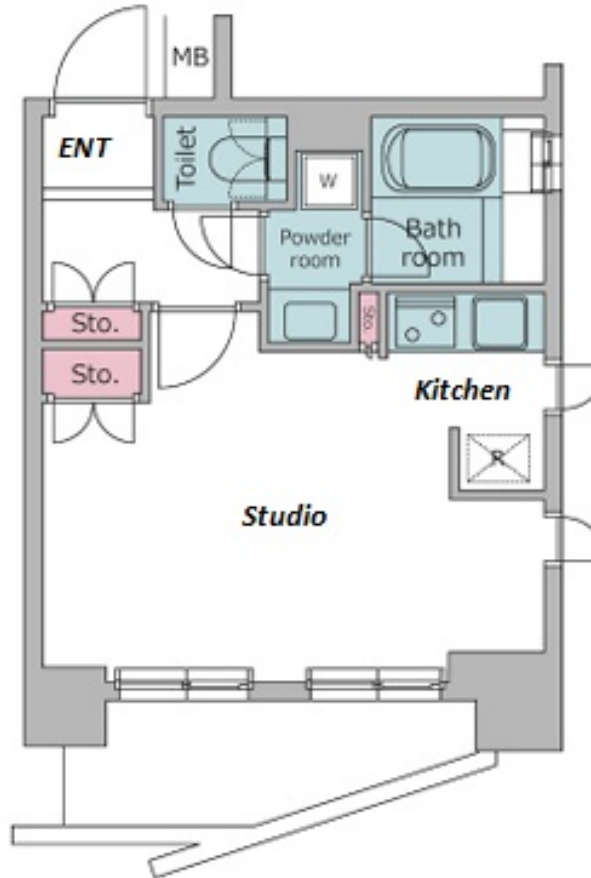
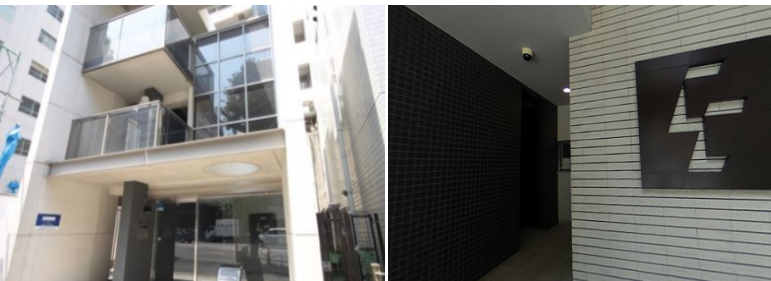


Property Name	RESIDIA OCHANOMIZU	Unit No.	TYPE	Access	Suehirochou Station on Ginza Line (5 min) Yushima Station on Chiyoda Line (7 min) Ochanomizu Station on JR Chuo Line Rapid Service (8 min)
		601	Apt.		
Address	3-1-4, Yushima, Bunkyo-Ku, Tokyo				



Lease Conditions	
LAYOUT	Studio
SIZE	33.12 m ² /356.5 ft ²
RENT	JPY 152,000 / month
Management Fee	JPY 10,000/month
Deposit	2 months
Key Money	-
Lease Term	Standard lease for 24 months
Available	Negotiable
Renewal Fee	1 month
Agent Fee	1 month + tax
Other Info	Key Replacement Fee : JPY20,000 Tax not included / Guarantor Company : TBC / No Key Money / Auto lock / Air-Con / Separated Toilet / Balcony / Internet (Extra Charge) / Penalty Fee for Early Cancellation / Flooring / Bathroom dryer

Building Information			
Completion	Aug, 2005	Earthquake Resistance	New
Structure	SRC, 17 floors above		
Car Parking	N/A		
Bicycle Parking	TBC		
Music Instrument	-	Pet	Allowed
Facilities	Within 20 min to Tokyo station by car / Near Large Parks / Janitor / Delivery box / Elevator / Security		

Remarks
Renters Insurance : Required / Tenant support fee: JPY.10,000+tax/2years Internet fee: JPY.2,000+tax/month / Pet:additional deposit (1 month) / Pet : a small dog or a cat

*The actual Layout & Size may differ slightly from this floor plans & pictures.



HOUSEREP TOKYO INC.

ハウスレップトーキョー株式会社

#301, 1-4-15, Hiroo, Shibuya-ku, Tokyo 150-0012, Japan

+81 (0)3 6427 5860

inquiry@housserep-tokyo.com

Transaction Type : Intermediate

Agent Fee : 1 month + tax

Website : www.housserep-tokyo.com

