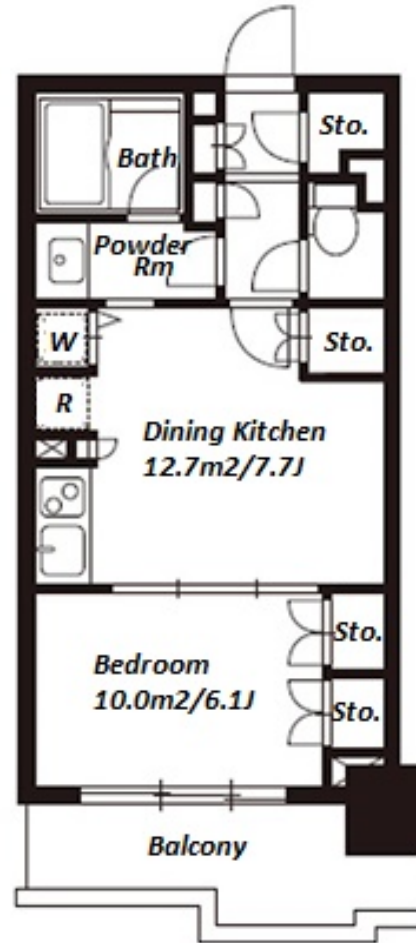
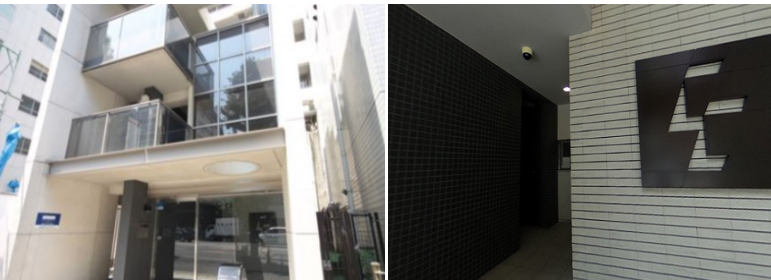


| | | | | | |
|---------------|----------------------------------|----------|------|--------|--|
| Property Name | RESIDIA OCHANOMIZU | Unit No. | TYPE | Access | Suehirochou Station on Ginza Line (5 min) Yushima Station on Chiyoda Line (7 min) Ochanomizu Station on JR Chuo Line Rapid Service (8 min) |
| | | 1003 | Apt. | | |
| Address | 3-1-4, Yushima, Bunkyo-Ku, Tokyo | | | | |



| Lease Conditions | |
|------------------|--|
| LAYOUT | 1 BR |
| SIZE | 35.7 m ² /384.27 ft ² |
| RENT | JPY 158,000 / month |
| Management Fee | JPY 10,000/month |
| Deposit | 2 months |
| Key Money | 1 month |
| Lease Term | Standard lease for 24 months |
| Available | Early, Aug, 2024 |
| Renewal Fee | 1 month |
| Agent Fee | 1 month + tax |
| Other Info | Key Replacement Fee : JPY 20,000 Tax not included / Guarantor Company : TBC / Auto lock / Air-Con / Separated Toilet / Balcony / Internet (Extra Charge) / Flooring / Bathroom dryer |

| Building Information | |
|-----------------------|---|
| Completion | Aug, 2005 |
| Earthquake Resistance | New |
| Structure | SRC, 17 floors above |
| Car Parking | N/A |
| Bicycle Parking | TBC |
| Music Instrument | - |
| Pet | Allowed |
| Facilities | Within 20 min to Tokyo station by car / Near Large Parks / Janitor / Delivery box / Elevator / Security |

| Remarks |
|---|
| Renters Insurance : Required / Tenant support fee: JPY.10,000+tax/2years Internet fee: JPY.2,000+tax/month / Pet:additional deposit (1 month) / Pet : a small dog or a cat |

*The actual Layout & Size may differ slightly from this floor plans & pictures.



HOUSEREP TOKYO INC.

ハウスレップトーキョー株式会社

#301, 1-4-15, Hiroo, Shibuya-ku, Tokyo 150-0012, Japan

+81 (0)3 6427 5860

inquiry@housserrep-tokyo.com

Transaction Type : Intermediate

Agent Fee : 1 month + tax

Website : www.housserrep-tokyo.com

