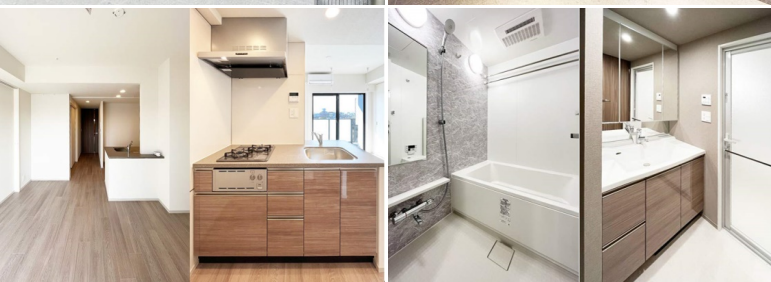


Property Name	ORCHID RESIDENCE SHIBUYA	Unit No.	TYPE	Access	Yoyogihachimann Station on Odakyu Line (9 min) Yoyogikouenn Station on Chiyoda Line (10 min)
	TOMIGAYA	405	Apt.		
Address	2-14-3, Tomigaya, Shibuya-Ku, Tokyo				

Stylish Mid Rise Apt. near Komaba Park & Yoyogi Park



Lease Conditions		
LAYOUT	2 BR	
SIZE	46.12 m ² /496.43 ft ²	
RENT	JPY 290,000 / month	
Management Fee	JPY 15,000/month	
Deposit	2 months	Key Money -
Lease Term	Standard lease for 24 months	
Available	Now	
Renewal Fee	1 month	
Agent Fee	1 month + tax	
Other Info	Guarantor Company : TBC / No Key Money / Auto lock / Air-Con / Separated Toilet / Balcony / Internet Included / Penalty Fee for Early Cancellation / Flooring / Bathroom dryer / WIC	

Building Information			
Completion	Jan, 2024	Earthquake Resistance	New
Structure	RC, 13 floors above		
Car Parking	extra charge		
Bicycle Parking	extra charge		
Music Instrument	-	Pet	Allowed
Facilities	Motorcycle Parking (extra charge) / Near Large Parks / Janitor / Delivery box / Elevator / Security / 24h Garbage Drop-off / Newly-built (~1 y/o)		

Remarks
Renters Insurance : Required / Pet:additional deposit (1 month) + depreciation fee (1 month) / Pet : a small dog or a cat

*The actual Layout & Size may differ slightly from this floor plans & pictures.



HOUSEREP TOKYO INC.

ハウズレップトーキョー株式会社

#301, 1-4-15, Hiroo, Shibuya-ku, Tokyo 150-0012, Japan

+81 (0)3 6427 5860

inquiry@housserep-tokyo.com

Transaction Type : Intermediate

Agent Fee : 1 month + tax

Website : www.housserep-tokyo.com

