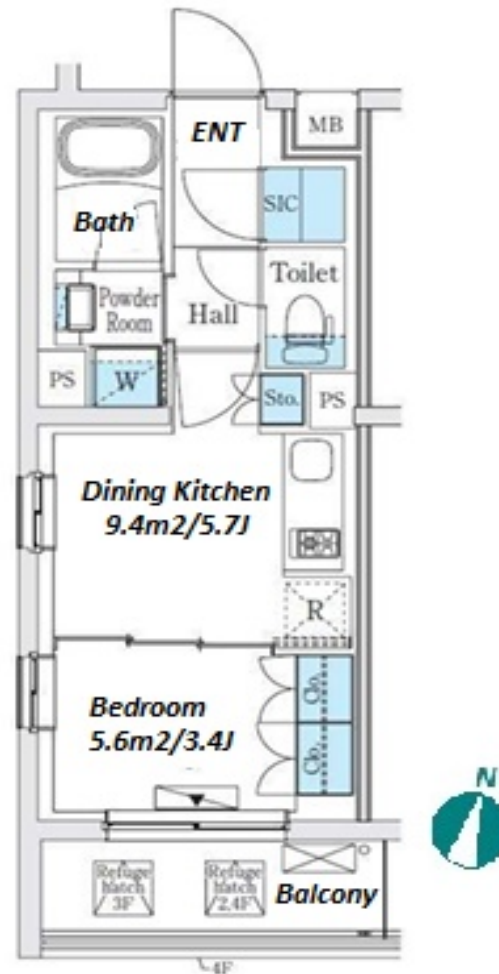


Property Name	COSMOS GRACIA GAKUGEIDAIGAKU	Unit No.	TYPE	Access	Gakugeidaigaku Station on Toyoko Line (8 min)
		101	Apt.		
Address	6-18-1, Shimoma, Setagaya-Ku, Tokyo				

Stylish Moderon Low Rise in Gakudai area.3min walk to bus stop to "Ebisu station".



\*The actual Layout & Size may differ slightly from this floor plans & pictures.

Lease Conditions	
LAYOUT	1 BR
SIZE	27.49 m²/295.89 ft²
RENT	JPY 132,000 / month
Management Fee	JPY10,000/month
Deposit	2 months
Key Money	-
Lease Term	Standard lease for 24 months
Available	Early, Jul, 2024
Renewal Fee	1 month
Agent Fee	1 month + tax
Other Info	Key Replacement Fee : JPY20,000 Tax not included / Guarantor Company : TBC / No Key Money / Free rent / Auto lock / Air-Con / Separated Toilet / Balcony / Internet (Extra Charge) / Penalty Fee for Early Cancellation / CS/CATV / Flooring / Bathroom dryer

Building Information			
Completion	Mar, 2021	Earthquake Resistance	New
Structure	RC, 4 floors above		
Car Parking	N/A		
Bicycle Parking	TBC		
Music Instrument	-	Pet	-
Facilities	Motorcycle Parking (TBC) / Near Large Parks / Delivery box / Low-rise		

Remarks
Renters Insurance : Required / Bicycle parking : Registration fee : JPY2,000+tax



HOUSEREP TOKYO INC.

ハウスレップトーキョー株式会社

#301, 1-4-15, Hiroo, Shibuya-ku, Tokyo 150-0012, Japan

+81 (0)3 6427 5860

inquiry@housserrep-tokyo.com

Transaction Type : Intermediate

Agent Fee : 1 month + tax

Website : www.housserrep-tokyo.com

