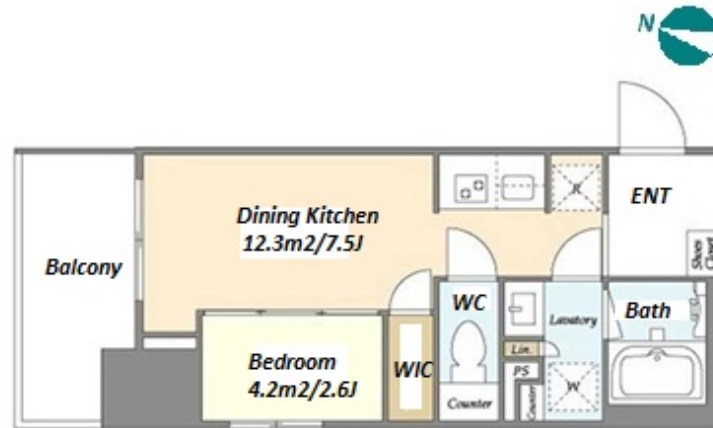
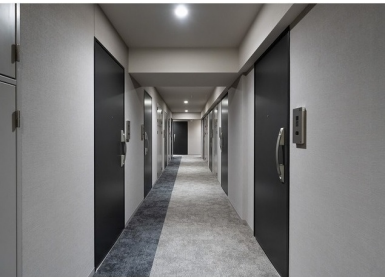


Property Name	DUE YOKOHAMA TSURUMI	Unit No.	TYPE	Access	Keikyuu tsurumi Station on Keikyu Line (6 min) Tsurumi Station on JR Keihin Tohoku Line (8 min)
		904	Apt.		
Address	5-15-13, Tsurumichuo, Tsurumi-Ku, Yokohama-Shi, Kanagawa				



Lease Conditions			
LAYOUT	1 BR		
SIZE	27.74 m²/298.59 ft²		
RENT	JPY 120,000 / month		
Management Fee	JPY8,000/month		
Deposit	1 month	Key Money	1 month
Lease Term	Standard lease for 24 months		
Available	Now		
Renewal Fee	1 month		
Agent Fee	1 month + tax		
Other Info	Guarantor Company : TBC / Auto lock / Air-Con / Separated Toilet / Balcony / Internet Included / Penalty Fee for Early Cancellation / Flooring / Bathroom dryer / WIC		

Building Information			
Completion	Mar, 2024	Earthquake Resistance	New
Structure	RC, 11 floors above		
Car Parking	JPY24,000 + tax / month		
Bicycle Parking	JPY300 + tax / month		
Music Instrument	-	Pet	Allowed
Facilities	Motorcycle Parking (JPY5,000 + tax / month) / Near Large Parks / Janitor / Delivery box / Elevator / Security / 24h Garbage Drop-off / Newly-built (~7 y/o) / Newly-built (~1 y/o)		

Remarks
Renters Insurance : Required / Parking : 1 month for deposit / Pet:additional deposit (1 month) / Pet : a small dog or a cat

*The actual Layout & Size may differ slightly from this floor plans & pictures.



HOUSEREP TOKYO INC.

ハウスレップトーキョー株式会社

#301, 1-4-15, Hiroo, Shibuya-ku, Tokyo 150-0012, Japan

+81 (0)3 6427 5860

inquiry@housserrep-tokyo.com

Transaction Type : Intermediate

Agent Fee : 1 month + tax

Website : www.housserrep-tokyo.com

