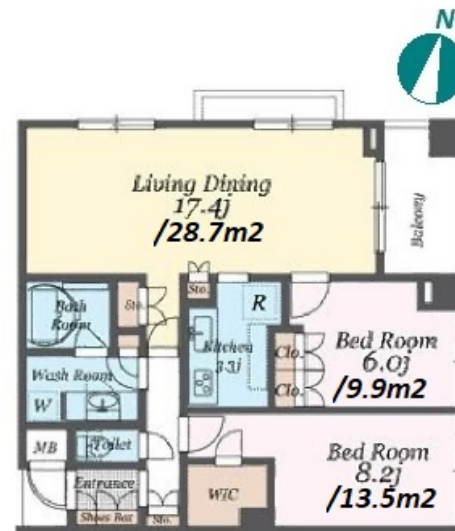


Property Name	PACIFIC RESIDENCE MEGURO HONCHO	Unit No.	TYPE	Access	Gakugeidaigaku Station on Toyoko Line (15 min) Musashikoyama Station on Tokyu Meguro Line (17 min)
		209	Apt.		
Address	2-23-6, Megurohoncho, Meguro-Ku, Tokyo				

Mid-rise Apartment in Meguro, near Shimizuike Park



Lease Conditions	
LAYOUT	2 BR
SIZE	77.75 m²/836.89 ft²
RENT	JPY 291,000 / month
Management Fee	JPY12,000/month
Deposit	2 months
Key Money	-
Lease Term	Standard lease for 24 months
Available	Negotiable
Renewal Fee	1 month
Agent Fee	1 month + tax
Other Info	Key Replacement Fee : JPY28,000 Tax not included / No Key Money / Auto lock / Air-Con / Separated Toilet / Balcony / Penalty Fee for Early Cancellation / Flooring / Bathroom dryer / WIC

Building Information	
Completion	Mar, 2007
Earthquake Resistance	New
Structure	RC, 7 floors above
Car Parking	JPY26,000 + tax / month
Bicycle Parking	for 1 space (Included)
Music Instrument	-
Pet	Allowed
Facilities	Near Large Parks / Delivery box / Elevator

Remarks
Renters Insurance : Required / Pet:additional deposit (1 month)

*The actual Layout & Size may differ slightly from this floor plans & pictures.



HOUSEREP TOKYO INC.

ハウズレップトーキョー株式会社

#301, 1-4-15, Hiroo, Shibuya-ku, Tokyo 150-0012, Japan

+81 (0)3 6427 5860

inquiry@housserrep-tokyo.com

Transaction Type : Intermediate

Agent Fee : 1 month + tax

Website : www.housserrep-tokyo.com

