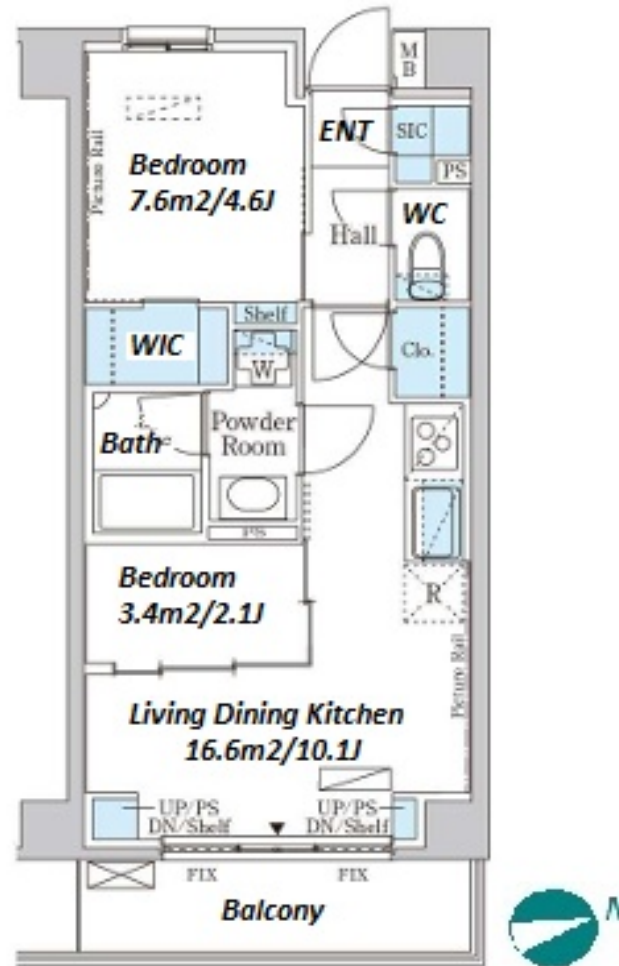
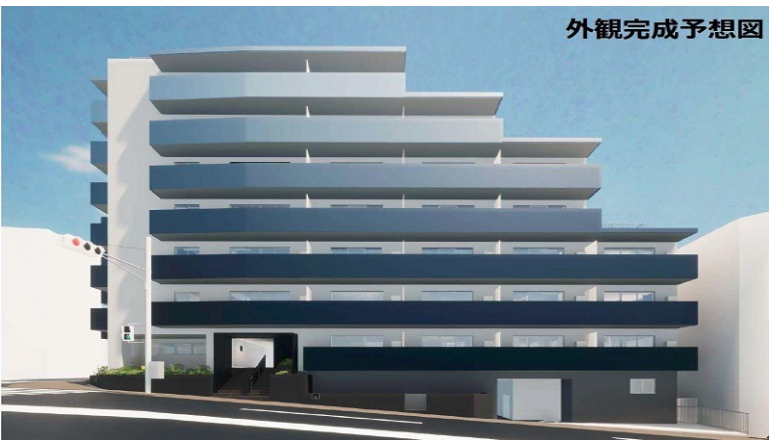


Property Name	INSTYLE RESIDENCE HONKOMAGOME	Unit No.	TYPE	Access	Honnkomagome Station on Namboku Line (11 min) Tabata Station on JR Yamanote Line (11 min)
		102	Apt.		
Address	4-19-1, Honkomagome, Bunkyo-Ku, Tokyo				

Mid rise apartment in TOKYO near Honkomagome Sta.



*The actual Layout & Size may differ slightly from this floor plans & pictures.

Lease Conditions		
LAYOUT	2 BR	
SIZE	40.5 m²/435.93 ft²	
RENT	JPY 149,000 / month	
Management Fee	JPY10,000/month	
Deposit	2 months	Key Money 1 month
Lease Term	Standard lease for 24 months	
Available	Now	
Renewal Fee	1 month	
Agent Fee	1 month + tax	
Other Info	Key Replacement Fee : JPY20,000 Tax not included / Guarantor Company : TBC / Auto lock / Air-Con / Separated Toilet / Balcony / Internet Included / Flooring / Bathroom dryer / WIC	

Building Information			
Completion	May, 1976	Earthquake Resistance	Old
Structure	SRC, 7 floors above and 1 basement floors		
Car Parking	JPY35,000 + tax / month		
Bicycle Parking	for 1 space (Included)		
Music Instrument	-	Pet	-
Facilities	Janitor / Delivery box / Elevator / Security		

Remarks
Renters Insurance : Required



HOUSEREP TOKYO INC.

ハウズレップトーキョー株式会社

#301, 1-4-15, Hiroo, Shibuya-ku, Tokyo 150-0012, Japan

+81 (0)3 6427 5860

inquiry@housserrep-tokyo.com

Transaction Type : Intermediate

Agent Fee : 1 month + tax

Website : www.housserrep-tokyo.com

