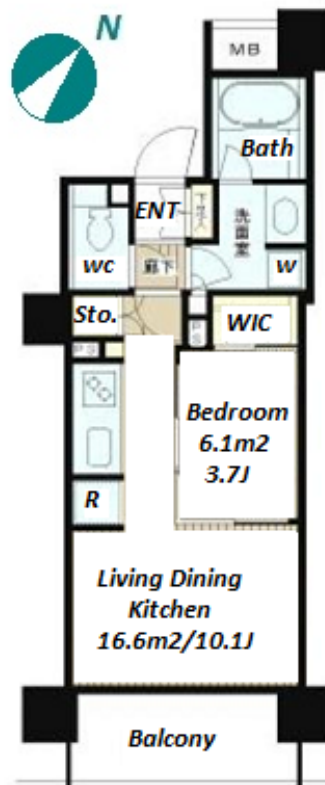


Property Name	PARK HOMES MEGURO RIVERSOUTH URBAN RESIDENCE	Unit No.	TYPE	Access	Gotanda Station on JR Yamanote Line (9 min) Meguro Station on JR Yamanote Line (13 min)
		1108	Apt.		
Address	3-8-21, Nishigotanda, Shinagawa-Ku, Tokyo				

Middle Rise Apt. in Nishigotanda, near "Meguro-river"



Lease Conditions			
LAYOUT	1 BR		
SIZE	35.53 m ² /382.44 ft ²		
RENT	JPY 173,000 / month		
Management Fee	JPY10,000/month		
Deposit	2 months	Key Money	1 month
Lease Term	Standard lease for 24 months		
Available	End, Jun, 2024		
Renewal Fee	1 month		
Agent Fee	1 month + tax		
Other Info	Key Replacement Fee : JPY20,000 Tax not included / Guarantor Company : TBC / Auto lock / Air-Con / Separated Toilet / Balcony / Penalty Fee for Early Cancellation / Musical Instrument Negotiable / CS/CATV / Flooring / Bathroom dryer / WIC		

Building Information			
Completion	Nov, 2005	Earthquake Resistance	New
Structure	RC, 14 floors above		
Car Parking	N/A		
Bicycle Parking	for 1 space (Included)		
Music Instrument	Negotiable	Pet	-
Facilities	Delivery box / Elevator / Security		

*The actual Layout & Size may differ slightly from this floor plans & pictures.



HOUSEREP TOKYO INC.

ハウスレップトーキョー株式会社

#301, 1-4-15, Hiroo, Shibuya-ku, Tokyo 150-0012, Japan

+81 (0)3 6427 5860 inquiry@housserrep-tokyo.com

Transaction Type : Intermediate

Agent Fee : 1 month + tax

Website : www.housserrep-tokyo.com



Remarks	
Renters Insurance : Required	