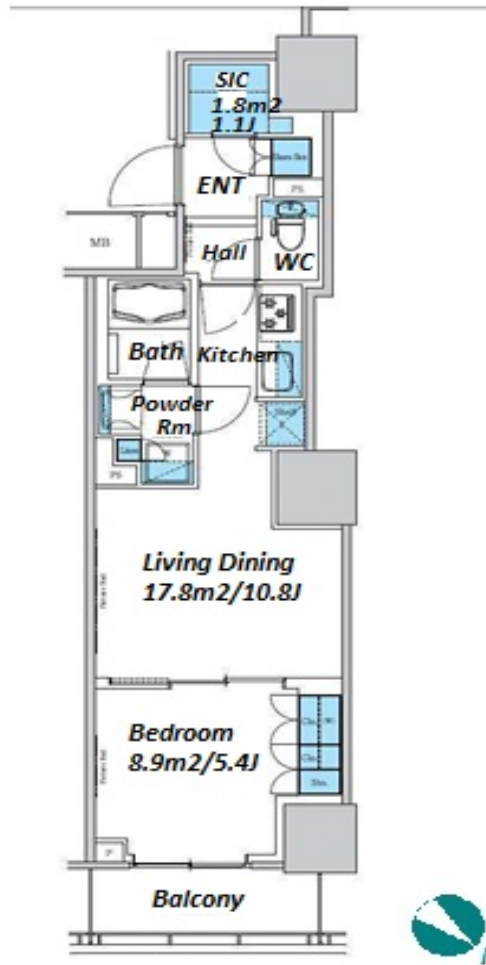


Property Name	PARK AXIS TAKINOGAWA LA BREEZE	Unit No.	TYPE	Access	Nishisugamo Station on Mita Line (4 min) Itabashi Station on JR Saikyo Line (9 min)
		713	Apt.		
Address	6-21-7, Takinogawa, Kita-Ku, Tokyo				

Middle Rise Apartment, Located in Peaceful Residential Area



Lease Conditions		
LAYOUT	1 BR	
SIZE	41.49 m²/446.59 ft²	
RENT	JPY 158,000 / month	
Management Fee	JPY12,000/month	
Deposit	2 months	Key Money 1 month
Lease Term	Standard lease for 24 months	
Available	Now	
Renewal Fee	1 month	
Agent Fee	1 month + tax	
Other Info	Guarantor Company : TBC / Auto lock / Air-Con / Separated Toilet / Balcony / Internet Included / Penalty Fee for Early Cancellation / Musical Instrument Negotiable / CS/CATV / Flooring / Bathroom dryer	

Building Information		
Completion	Jan, 2014	Earthquake Resistance New
Structure	RC, 17 floors above and 1 basement floors	
Car Parking	JPY31,000 + tax / month	
Bicycle Parking	for 1 space (Included)	
Music Instrument	Negotiable	Pet Allowed
Facilities	Motorcycle Parking (TBC) / Gym ((Included)) / Near Large Parks / French Community / Front desk / Janitor / Delivery box / Elevator / Close to Station / 24h Garbage Drop-off / High-rise	

*The actual Layout & Size may differ slightly from this floor plans & pictures.



HOUSEREP TOKYO INC.

ハウスレップトーキョー株式会社

#301, 1-4-15, Hiroo, Shibuya-ku, Tokyo 150-0012, Japan

+81 (0)3 6427 5860

inquiry@housserep-tokyo.com

Transaction Type : Intermediate

Agent Fee : 1 month + tax

Website : www.housserep-tokyo.com



Remarks
Renters Insurance : Required / Key replacement: extra charge / Bicycle parking : Registration fee: JPY.2,000+tax / Pet:additional deposit (1 month) / Pet : a small dog or a cat