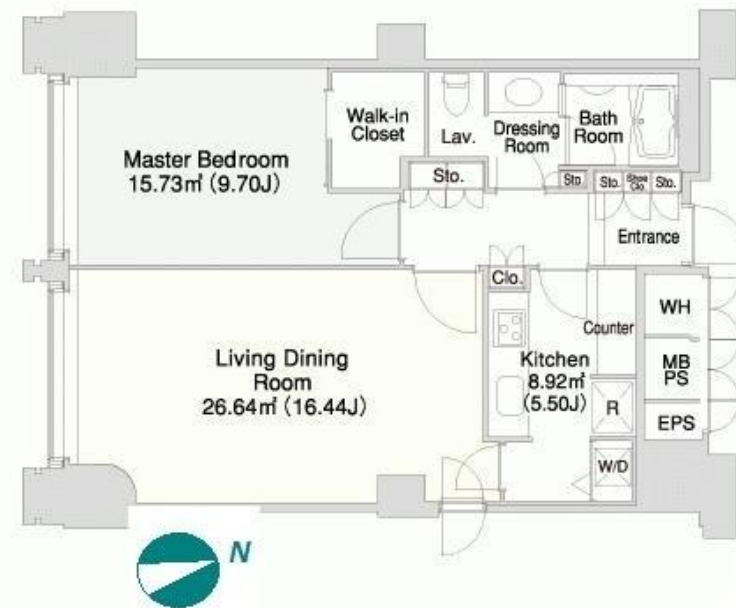


Property Name	LA TOUR CHIYODA	Unit No.	TYPE	Access	Kudanshita Station on Tozai Line (5 min) Jinnbouchou Station on Hanzomon Line (6 min) Suidobashi Station on JR Chuo Line Rapid Service (6 min) Iidabashi Station on Yurakucho Line (11 min)
		2308	Apt.		
Address	3-5-3, Nishikanda, Chiyoda-Ku, Tokyo				

High Rise Tower Residence in Iidabashi /Suidobashi Area



Lease Conditions	
LAYOUT	1 BR
SIZE	69.27 m ² /745.61 ft ²
RENT	JPY 480,000 / month
Management Fee	-
Deposit	2 months
Key Money	-
Lease Term	Fixed term lease for 36 months
Available	Now
Renewal Fee	-
Agent Fee	1 month + tax
Other Info	Depreciation : 1 month / No Key Money / Auto lock / Fridge / Air-Con / Separated Toilet / Penalty Fee for Early Cancellation / Washer / Dryer / Oven / WIC

Building Information		
Completion	Jan, 2004	Earthquake Resistance New
Structure	RC, 32 floors above and 2 basement floors	
Car Parking	TBC	
Bicycle Parking	TBC	
Music Instrument	-	Pet Negotiable
Facilities	Motorcycle Parking (TBC) / Trunk Room (TBC) / Gym ((Included)) / Within 20 min to Tokyo station by car / Near Large Parks / French Community / Front desk / Elevator / Close to Station / High-rise	

Remarks

*The actual Layout & Size may differ slightly from this floor plans & pictures.



HOUSEREP TOKYO INC.

ハウスレップトーキョー株式会社

#301, 1-4-15, Hiroo, Shibuya-ku, Tokyo 150-0012, Japan

+81 (0)3 6427 5860

inquiry@housserrep-tokyo.com

Transaction Type : Intermediate

Agent Fee : 1 month + tax

Website : www.housserrep-tokyo.com

