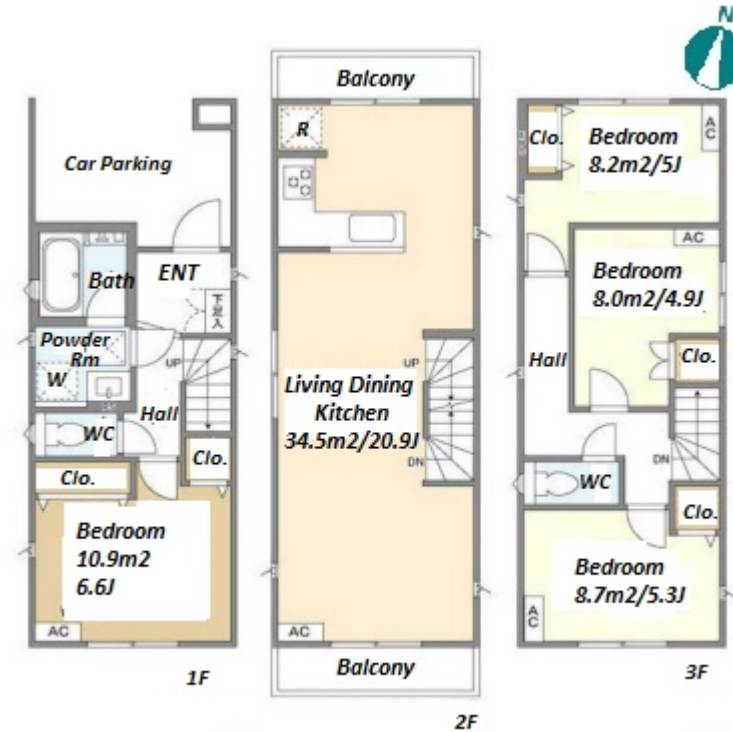


Property Name	KOLET KAMATAMINAMI #15	Unit No.	TYPE	Access	Zoushiki Station on Keikyu Line (10 min)
			House		
Address	2-16-4, Nishiropkugo, Ota-Ku, Tokyo				



Lease Conditions			
LAYOUT	4 BR		
SIZE	100.18 m ² /1078.32 ft ²		
RENT	JPY 272,000 / month		
Management Fee	-		
Deposit	2 months	Key Money	1 month
Lease Term	Standard lease for 24 months		
Available	Now		
Renewal Fee	1 month		
Agent Fee	1 month + tax		
Other Info	Guarantor Company : TBC / Free rent / Air-Con / Separated Toilet / Balcony / Internet (Extra Charge) / Penalty Fee for Early Cancellation / Musical Instrument Negotiable / Flooring / Bathroom dryer / 2 Toilets		

Building Information			
Completion	Apr, 2023	Earthquake Resistance	New
Structure	Wooden, 3 story		
Car Parking	(Included)		
Bicycle Parking	-		
Music Instrument	Negotiable	Pet	Negotiable
Facilities	House / Delivery box / Newly-built (~1 y/o)		

Remarks
Renters Insurance : Required

*The actual Layout & Size may differ slightly from this floor plans & pictures.



HOUSEREP TOKYO INC.

ハウズレップトーキョー株式会社

#301, 1-4-15, Hiroo, Shibuya-ku, Tokyo 150-0012, Japan

+81 (0)3 6427 5860 inquiry@housserrep-tokyo.com

Transaction Type : Intermediate

Agent Fee : 1 month + tax

Website : www.housserrep-tokyo.com

